

# MOB1A/MOB1B Rabbit pAb

货号: **AYP21377**

## 产品信息

反应	Human,Mouse,Rat
宿主	Rabbit
克隆性	Polyclonal
预测反应	
应用	WB IF/ICC
推荐浓度	<b>WB:</b> 1:500 - 1:2000 <b>IF/ICC:</b> 1:50 - 1:200
理论分子量	
实测分子量	24KDa
形式	Liquid
保存条件	Store at -20°C. Avoid freeze / thaw cycles. Buffer: PBS with 0.01% thiomersal,50% glycerol,pH7.3.
偶联物	Unconjugated
阳性对照	K-562,Daudi
细胞定位	cytoplasm,cytosol,extracellular exosome,nucleolus,nucleoplasm,nucleus
纯化	Affinity purification

## 抗原信息

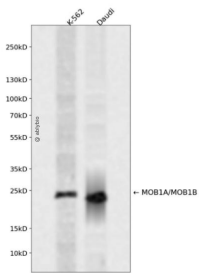
抗原信息	A synthetic peptide corresponding to a sequence within amino acids 150-250 of human MOB1A/MOB1B ( NP_060691.2/NP_775739.1).
序列	TILKRLFRVYAHYHQHFDSVMQLQEEAHLNTSFKHFFVQEFNLIDRRELAPLQELIEKLGSKDR/MSFLFGSRSSKTFKPK KNIPEGSHQYELLKHAE

## 靶点信息

研究背景	The protein MOB1 is considered to be one of the core components of the mammalian Hippo signaling pathway, which controls organ size and tumor growth by enhancing apoptosis. Loss of the encoded protein results in cell proliferation and cancer formation. The encoded protein is also involved in the control of microtubule stability during cytokinesis. MOB1A and MOB1B, which have 95% sequence identity, play redundant biological roles and are both termed MOB1.
------	--

基因ID	55233,92597
基因名	MOB1A,MOB1B
Swiss	Q9H8S9,Q7I9L4
别名	MOB1A/MOB1B

## 产品验证



Western blot analysis of MOB1A/MOB1B expressed in K-562, Daudi using MOB1A/MOB1B Rabbit pAb at 1:1000. Secondary antibody: HRP Goat Anti-Rabbit IgG (H+L) at 1:5000. Lysates/proteins: 30ug per lane. Blocking buffer: 5% non-fat dry milk in TBST. Detection: ECL Enhanced Kit. Exposure time: 120s.

## 实验步骤

访问官网浏览详情: [www.ablybio.cn](http://www.ablybio.cn)