

Phospho-MCL1-T163 Rabbit pAb

货号: **AYP21369**

产品信息

反应	Human,Mouse
宿主	Rabbit
克隆性	Polyclonal
预测反应	
应用	WB
推荐浓度	WB: 1:500 - 1:2000
理论分子量	37kDa
实测分子量	41kDa
形式	Liquid
保存条件	Store at -20°C. Avoid freeze / thaw cycles. Buffer: PBS with 0.01% thiomersal,50% glycerol,pH7.3.
偶联物	Unconjugated
阳性对照	NIH/3T3
细胞定位	Cytoplasm,Membrane,Mitochondrion,Nucleus,Single-pass membrane protein,nucleoplasm
纯化	Affinity purification

抗原信息

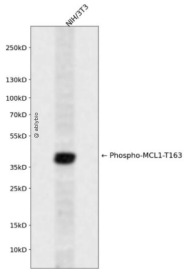
抗原信息	A synthetic phosphorylated peptide around T163 of human MCL1 (NP_068779.1).
序列	PSTPP

靶点信息

研究背景	This gene encodes an anti-apoptotic protein, which is a member of the Bcl-2 family. Alternative splicing results in multiple transcript variants. The longest gene product (isoform 1) enhances cell survival by inhibiting apoptosis while the alternatively spliced shorter gene products (isoform 2 and isoform 3) promote apoptosis and are death-inducing.
基因ID	4170
基因名	MCL1

Swiss	Q07820
别名	MCL1;BCL2L3;EAT;MCL1-ES;MCL1L;MCL1S;Mcl-1;TM;bcl2-L-3;mcl1/EAT;MCL1

产品验证



Western blot analysis of Phospho-MCL1-T163 expressed in NIH/3T3 using Phospho-MCL1-T163 Rabbit p Ab at 1:1000. Secondary antibody: HRP Goat Anti-Rabbit IgG (H+L) at 1:5000. Lysates/proteins: 30ug per lane. Blocking buffer: 5% non-fat dry milk in TBST. Detection: ECL Enhanced Kit. Exposure time: 120s

实验步骤

访问官网浏览详情: www.ablybio.cn