

MRPL40 Rabbit pAb

货号: **AYP21368**

产品信息

反应	Human
宿主	Rabbit
克隆性	Polyclonal
预测反应	
应用	WB
推荐浓度	WB: 1:500 - 1:2000
理论分子量	24kDa
实测分子量	24kDa
形式	Liquid
保存条件	Store at -20°C. Avoid freeze / thaw cycles. Buffer: PBS with 0.01% thiomersal, 50% glycerol, pH7.3.
偶联物	Unconjugated
阳性对照	A-549, U2OS, BxPC-3
细胞定位	mitochondrial inner membrane, mitochondrial ribosome, mitochondrion, nucleolus, nucleus
纯化	Affinity purification

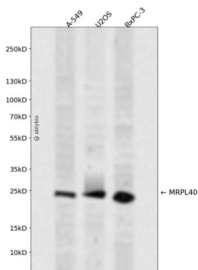
抗原信息

抗原信息	Recombinant fusion protein containing a sequence corresponding to amino acids 45-206 of human MRPL40 (NP_003767.2).
序列	MRSEPLRKKKKVDPKKDQEAKERLKRKIRKLEKATQELIPIEDFITPLKFLDKARERPQVELTFEETERRALLLKKWSLYKQQE RKMERDTIRAMLEAQQEALQLELQLESPKLHAEAIKRDPNLFPFEKEGPHYTPPIPNYQPPEGRYNDITKVYTVQVEFKR

靶点信息

研究背景	Mammalian mitochondrial ribosomal proteins are encoded by nuclear genes and help in protein synthesis within the mitochondrion. Mitochondrial ribosomes (mitoribosomes) consist of a small 28S subunit and a large 39S subunit. They have an estimated 75% protein to rRNA composition compared to prokaryotic ribosomes, where this ratio is reversed. Another difference between mammalian mitoribosomes and prokaryotic ribosomes is that the latter contain a 5S rRNA. Among different species, the proteins comprising the mitoribosome differ greatly in sequence, and sometimes in biochemical properties, which prevents easy recognition by sequence homology. This gene encodes a 39S subunit protein. Deletions in this gene may contribute to the etiology of velo-cardio-facial syndrome and DiGeorge syndrome.
基因ID	64976
基因名	MRPL40
Swiss	Q9NQ50
别名	URIM;L40mt;NLVCF;MRPL22;MRP-L22;MRP-L40;MRPL40

产品验证



Western blot analysis of MRPL40 expressed in A-549,U2OS,BxPC-3 using MRPL40 Rabbit pAb at 1:1000. Secondary antibody: HRP Goat Anti-Rabbit IgG (H+L) at 1:5000. Lysates/proteins: 30ug per lane. Blocking buffer: 5% non-fat dry milk in TBST. Detection: ECL Enhanced Kit. Exposure time: 120s.

实验步骤

访问官网浏览详情: www.ablybio.cn