

Mrpl48 Rabbit pAb

货号: **AYP21367**

产品信息

反应	Human,Mouse,Rat
宿主	Rabbit
克隆性	Polyclonal
预测反应	
应用	WB
推荐浓度	WB: 1:500 - 1:2000
理论分子量	24kDa
实测分子量	19kDa
形式	Liquid
保存条件	Store at -20°C. Avoid freeze / thaw cycles. Buffer: PBS with 0.01% thiomersal,50% glycerol,pH7.3.
偶联物	Unconjugated
阳性对照	MCF7,Mouse liver,Mouse spleen,Rat brain
细胞定位	mitochondrial inner membrane,mitochondrial ribosome,mitochondrion
纯化	Affinity purification

抗原信息

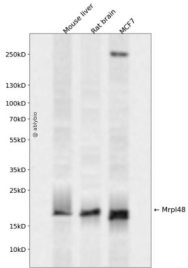
抗原信息	Recombinant fusion protein containing a sequence corresponding to amino acids 28-211 of mouse Mrpl48 (NP_942128.2).
序列	SLGENPIFSAGGILWTSRHYKTKPTRGIGRYRHLVKVQEPKKKKAKVELRAINVGTDYEYGVLNHILTAYDMSLAESYAQYV HRLCNRLSIKVEESYAMPTKTMEVMRLPDQGNKMVLDSILTTHERVVQISGLSATFAEIFLEVLQSNLPEGVRLSVREHTEE DFKGRFKARPELEELLAKLN

靶点信息

研究背景	Located in mitochondrion. Is expressed in several structures, including early conceptus; gonad; heart; liver; and metanephros. Orthologous to human MRPL48 (mitochondrial ribosomal protein L48).
基因ID	52443

基因名	
Swiss	Q8JZS9
别名	L48mt;CGI-118;MRP-L48;D4ErtD786e;1810030E20Rik;2610028L11Rik;Mrpl48

产品验证



Western blot analysis of Mrpl48 expressed in Mouse liver,Rat brain,MCF7 using Mrpl48 Rabbit pAb at 1:1000. Secondary antibody: HRP Goat Anti-Rabbit IgG (H+L) at 1:5000. Lysates/proteins: 30ug per lane. Blocking buffer: 5% non-fat dry milk in TBST. Detection: ECL Enhanced Kit. Exposure time: 120s.

实验步骤

访问官网浏览详情: www.ablybio.cn