

# Mrpl46 Rabbit pAb

货号: AYP21366

## 产品信息

反应	Human,Mouse,Rat
宿主	Rabbit
克隆性	Polyclonal
预测反应	
应用	WB IHC
推荐浓度	<b>WB:</b> 1:500 - 1:2000 <b>IHC:</b> 1:50 - 1:200
理论分子量	32kDa
实测分子量	32kDa
形式	Liquid
保存条件	Store at -20°C. Avoid freeze / thaw cycles. Buffer: PBS with 0.01% thiomersal,50% glycerol,pH7.3.
偶联物	Unconjugated
阳性对照	U-251MG,A-549,HepG2,U2OS,Mouse testis,Mouse liver,Rat thymus,Rat uterus
细胞定位	mitochondrial inner membrane,mitochondrion,nucleoplasm
纯化	Affinity purification

## 抗原信息

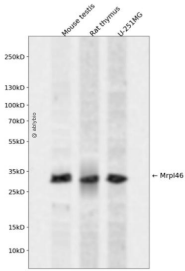
抗原信息	Recombinant fusion protein containing a sequence corresponding to amino acids 1-283 of mouse Mrpl46 (NP_075820.1).
序列	MAAPVGRLLGLARGWRQLDRFWAGSSRGLSLEAASSSSRSPWRLSGALCLQRPLITKALTPLQEEMAGLLQQIEVERS LYSDHELRLALDEAQRLLAKKKADLYDEEQEQGITLAQDLEDMWEQAFLLQFRPGARETEADKKNDRSLHRKLDRLNLLVLR EKLGDQDVWMLPQVEWQPGETLRGTAERILATLSENMEAKFLGNAPCGHYKFKFKAIQTESDLGVKVVFFKALLLTGD FVQAGKKSRLVWASKEELGDYLQPKYLAQVRRFLDSDGLSCL

## 靶点信息

研究背景	Predicted to be a structural constituent of ribosome. Located in mitochondrion. Is expressed in several structures, including early conceptus; gonad; heart; liver; and metanephros. Orthologous to human MRPL46 (mitochondrial ribosomal protein L46).
------	---

基因ID	67308
基因名	
Swiss	Q9EQI8
别名	C80107;LIECG2;P2ECSL;C15orf4;3110052F15Rik;Mrpl46

## 产品验证



Western blot analysis of Mrpl46 expressed in Mouse testis,Rat thymus,U-251MG using Mrpl46 Rabbit pAb at 1:1000. Secondary antibody: HRP Goat Anti-Rabbit IgG (H+L) at 1:5000. Lysates/proteins: 30ug per lane. Blocking buffer: 5% non-fat dry milk in TBST. Detection: ECL Enhanced Kit. Exposure time: 120s.

## 实验步骤

访问官网浏览详情: [www.ablybio.cn](http://www.ablybio.cn)