

Phospho-ARHGEF2-S886 Rabbit pAb

货号: AYP21358

产品信息

反应	Human,Mouse,Rat
宿主	Rabbit
克隆性	Polyclonal
预测反应	
应用	WB
推荐浓度	WB: 1:500 - 1:2000
理论分子量	108kDa/111kDa
实测分子量	120kDa
形式	Liquid
保存条件	Store at -20°C. Avoid freeze / thaw cycles. Buffer: PBS with 0.01% thiomersal,50% glycerol,pH7.3.
偶联物	Unconjugated
阳性对照	C6
细胞定位	Cell junction,Cell projection,Cytoplasm,Cytoplasmic vesicle,Golgi apparatus,cytoskeleton,ruffle membrane,spindle,tight junction
纯化	Affinity purification

抗原信息

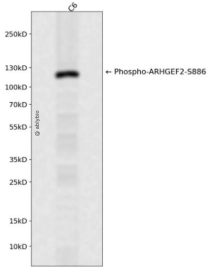
抗原信息	A synthetic phosphorylated peptide around S886 of human ARHGEF2 (NP_001155855.1).
序列	RRSLP

靶点信息

研究背景	Rho GTPases play a fundamental role in numerous cellular processes that are initiated by extracellular stimuli that work through G protein coupled receptors. The encoded protein may form complex with G proteins and stimulate rho-dependent signals. Alternatively spliced transcript variants encoding different isoforms have been identified.[provided by RefSeq, Jun 2009]
基因ID	9181

基因名	ARHGEF2
Swiss	Q92974
别名	GEF;GEF-H1;GEFH1;LFP40;P40;ARHGEF2;NEDMHM

产品验证



Western blot analysis of Phospho-ARHGEF2-S886 expressed in C6 using Phospho-ARHGEF2-S886 Rabbit pAb at 1:1000. Secondary antibody: HRP Goat Anti-Rabbit IgG (H+L) at 1:5000. Lysates/proteins: 30ug per lane. Blocking buffer: 5% non-fat dry milk in TBST. Detection: ECL Enhanced Kit. Exposure time: 120s.

实验步骤

访问官网浏览详情: www.ablybio.cn