

— ABLYBIO, Help Your Research



Phospho-Tau-T231 Rabbit pAb

货号: **AYP21355**

产品信息

反应	Mouse
宿主	Rabbit
克隆性	Polyclonal
预测反应	
应用	WB
推荐浓度	WB: 1:500 - 1:2000
理论分子量	79kDa
实测分子量	60kDa
形式	Liquid
保存条件	Store at -20°C. Avoid freeze / thaw cycles. Buffer: PBS with 0.01% thiomersal, 50% glycerol, pH7.3.
偶联物	Unconjugated
阳性对照	Mouse brain
细胞定位	Cell membrane, Cell projection, Cytoplasm, Cytoplasmic side, Peripheral membrane protein, axon, cytoskeleton, cytosol
纯化	Affinity purification

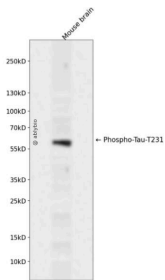
抗原信息

抗原信息	A synthetic phosphorylated peptide around T548 of human Tau (NP_058519.3).
------	--

靶点信息

研究背景	This gene encodes the microtubule-associated protein tau (MAPT) whose transcript undergoes complex, regulated alternative splicing, giving rise to several mRNA species. MAPT transcripts are differentially expressed in the nervous system, depending on stage of neuronal maturation and neuron type. MAPT gene mutations have been associated with several neurodegenerative disorders such as Alzheimer's disease, Pick's disease, frontotemporal dementia, cortico-basal degeneration and progressive supranuclear palsy. [provided by RefSeq, Jul 2008]
基因ID	4137
基因名	MAPT
Swiss	P10636 (https://www.uniprot.org/uniprotkb/P10636/entry)
别名	DDPAC,FTDP-17,MAPTL,MSTD,MTBT1,MTBT2,PPND,PPP1R103,TAU,MAPT,Phospho-Tau-T231 Rabbit pAb,Neurofibrillary tangle protein,Paired helical filament-tau

产品验证



Western blot analysis of Phospho-Tau-T231 expressed in Mouse brain using Phospho-Tau-T231 Rabbit pAb at 1:1000. Secondary antibody: HRP Goat Anti-Rabbit IgG (H+L) at 1:5000. Lysates/proteins: 30ug per lane. Blocking buffer: 5% non-fat dry milk in TBST. Detection: ECL Enhanced Kit. Exposure time: 120s.

实验步骤

访问官网浏览详情: www.ablybio.cn (<https://www.ablybio.cn/www.ablybio.cn>)