

# Phospho-PKC mu-S916 Rabbit pAb

货号: **AYP21340**

## 产品信息

反应	Human,Mouse
宿主	Rabbit
克隆性	Polyclonal
预测反应	
应用	WB
推荐浓度	<b>WB:</b> 1:500 - 1:2000
理论分子量	101kDa
实测分子量	102kDa
形式	Liquid
保存条件	Store at -20°C. Avoid freeze / thaw cycles. Buffer: PBS with 0.01% thiomersal,50% glycerol,pH7.3.
偶联物	Unconjugated
阳性对照	HeLa
细胞定位	Cell membrane,Cytoplasm,Golgi apparatus,trans-Golgi network
纯化	Affinity purification

## 抗原信息

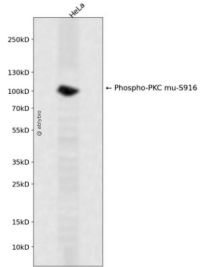
抗原信息	A synthetic phosphorylated peptide around S916 of human PKC mu (NP_002733.2?).
序列	RVSIL

## 靶点信息

研究背景	The protein encoded by this gene is a serine/threonine protein kinase involved in many cellular processes , including Golgi body membrane integrity and transport, cell migration and differentiation, MAPK8/JNK1 and Ras pathway signaling, MAPK1/3 (ERK1/2) pathway signaling, cell survival, and regulation of cell shape and adhesion. [provided by RefSeq, Jan 2017]
基因ID	5587
基因名	PRKD1

Swiss	Q15139
别名	CHDED;PKC-MU;PKCM;PKD;PRKCM;PRKD1

## 产品验证



Western blot analysis of Phospho-PKC mu-S916 expressed in HeLa using Phospho-PKC mu-S916 Rabbit pAb at 1:1000. Secondary antibody: HRP Goat Anti-Rabbit IgG (H+L) at 1:5000. Lysates/proteins: 30ug per lane. Blocking buffer: 5% non-fat dry milk in TBST. Detection: ECL Enhanced Kit. Exposure time: 1 20s.

## 实验步骤

访问官网浏览详情: [www.ablybio.cn](http://www.ablybio.cn)