

# Phospho-CDC25A-S76 Rabbit pAb

货号: **AYP21316**

## 产品信息

反应	Human,Mouse,Rat
宿主	Rabbit
克隆性	Polyclonal
预测反应	
应用	WB
推荐浓度	<b>WB:</b> 1:500 - 1:2000
理论分子量	54kDa/59kDa
实测分子量	59kDa
形式	Liquid
保存条件	Store at -20°C. Avoid freeze / thaw cycles. Buffer: PBS with 0.01% thiomersal,50% glycerol,pH7.3.
偶联物	Unconjugated
阳性对照	NIH/3T3
细胞定位	cytoplasm,cytosol,nucleoplasm,nucleus
纯化	Affinity purification

## 抗原信息

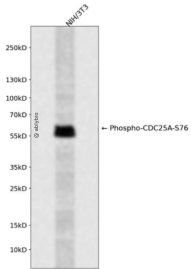
抗原信息	A synthetic phosphorylated peptide around S76 of human CDC25A (NP_001780.2).
序列	MGSSE

## 靶点信息

研究背景	CDC25A is a member of the CDC25 family of phosphatases. CDC25A is required for progression from G1 to the S phase of the cell cycle. It activates the cyclin-dependent kinase CDC2 by removing two phosphate groups. CDC25A is specifically degraded in response to DNA damage, which prevents cells with chromosomal abnormalities from progressing through cell division. CDC25A is an oncogene, although its exact role in oncogenesis has not been demonstrated. Two transcript variants encoding different isoforms have been found for this gene.
基因ID	993

基因名	CDC25A
Swiss	P30304
别名	CDC25A;CDC25A2

## 产品验证



Western blot analysis of Phospho-CDC25A-S76 expressed in NIH/3T3 using Phospho-CDC25A-S76 Rabbit pAb at 1:1000. Secondary antibody: HRP Goat Anti-Rabbit IgG (H+L) at 1:5000. Lysates/proteins: 30ug per lane. Blocking buffer: 5% non-fat dry milk in TBST. Detection: ECL Enhanced Kit. Exposure time: 120s.

## 实验步骤

访问官网浏览详情: [www.ablybio.cn](http://www.ablybio.cn)