

— ABLYBIO, Help Your Research



# PHLPP2 Rabbit pAb

货号: **AYP21312**

## 产品信息

反应	Human,Mouse,Rat
宿主	Rabbit
克隆性	Polyclonal
预测反应	
应用	WB IF/ICC
推荐浓度	<b>WB:</b> 1:500 - 1:2000 <b>IF/ICC:</b> 1:50 - 1:200
理论分子量	147kDa
实测分子量	140kDa
形式	Liquid
保存条件	Store at -20°C. Avoid freeze / thaw cycles. Buffer: PBS with 0.01% thiomersal,50% glycerol,pH7.3.
偶联物	Unconjugated
阳性对照	Mouse eye,Rat eye
细胞定位	cytoplasm,cytosol,intercellular bridge,mitotic spindle,nucleoplasm,photoreceptor outer segment membrane
纯化	Affinity purification

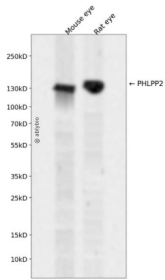
## 抗原信息

抗原信息	A synthetic peptide corresponding to a sequence within amino acids 1250-1323 of human PHLPP2 (NP_055835.2).
------	---

## 靶点信息

研究背景	PHLPP2 (PH domain and leucine rich repeat protein phosphatase 2) is a protein-coding gene. GO annotations related to this gene include protein serine/threonine phosphatase activity. An important paralog of this gene is PHLPP1.
基因ID	23035
基因名	PHLPP2
Swiss	Q6ZVD8 ( <a href="https://www.uniprot.org/uniprotkb/Q6ZVD8/entry">https://www.uniprot.org/uniprotkb/Q6ZVD8/entry</a> )
别名	PHLPP2,PHLPPL,PPM3B,PHLPP2 Rabbit pAb,PH domain leucine-rich repeat-containing protein phosphatase-like,KIAA0931

## 产品验证



Western blot analysis of PHLPP2 expressed in Mouse eye,Rat eye using PHLPP2 Rabbit pAb at 1:1000. Secondary antibody: HRP Goat Anti-Rabbit IgG (H+L) at 1:5000. Lysates/proteins: 30ug per lane. Blocking buffer: 5% non-fat dry milk in TBST. Detection: ECL Enhanced Kit. Exposure time: 120s.

## 实验步骤

访问官网浏览详情: [www.ablybio.cn](http://www.ablybio.cn) (<https://www.ablybio.cn/www.ablybio.cn>)