

Phospho-SMO-S616 Rabbit pAb

货号: **AYP21305**

产品信息

反应	Human
宿主	Rabbit
克隆性	Polyclonal
预测反应	
应用	DB WB
推荐浓度	DB: 1:500 - 1:1000 WB: 1:500 - 1:1000
理论分子量	86kDa
实测分子量	86kDa
形式	Liquid
保存条件	Store at -20°C. Avoid freeze / thaw cycles. Buffer: PBS with 0.01% thiomersal, 50% glycerol, pH 7.3.
偶联物	Unconjugated
阳性对照	
细胞定位	Cell projection, Membrane, Multi-pass membrane protein, cilium
纯化	Affinity purification

抗原信息

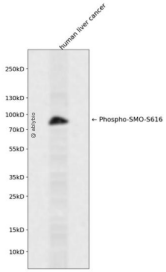
抗原信息	A synthetic phosphorylated peptide around S616 of human SMO (NP_005622.1).
序列	VSSAW

靶点信息

研究背景	The protein encoded by this gene is a G protein-coupled receptor that interacts with the patched protein, a receptor for hedgehog proteins. The encoded protein transduces signals to other proteins after activation by a hedgehog protein/patched protein complex.
基因ID	6608
基因名	SMO

Swiss	Q99835
别名	Gx;CRJS;SMOH;FZD11;SMO

产品验证



Western blot analysis of Phospho-SMO-S616 expressed in human liver cancer using Phospho-SMO-S616 R abbit pAb at 1:1000. Secondary antibody: HRP Goat Anti-Rabbit IgG (H+L) at 1:5000. Lysates/proteins: 3 0ug per lane. Blocking buffer: 5% non-fat dry milk in TBST. Detection: ECL Enhanced Kit. Exposure time: 120s.

实验步骤

访问官网浏览详情: www.ablybio.cn