

# Phospho-SMO-S611/615 Rabbit pAb

货号: **AYP21303**

## 产品信息

反应	Human
宿主	Rabbit
克隆性	Polyclonal
预测反应	
应用	WB
推荐浓度	<b>WB:</b> 1:500 - 1:1000
理论分子量	86kDa
实测分子量	86kDa
形式	Liquid
保存条件	Store at -20°C. Avoid freeze / thaw cycles. Buffer: PBS with 0.01% thiomersal, 50% glycerol, pH7.3.
偶联物	Unconjugated
阳性对照	Jurkat
细胞定位	Cell projection, Membrane, Multi-pass membrane protein, cilium
纯化	Affinity purification

## 抗原信息

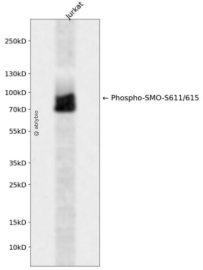
抗原信息	A synthetic phosphorylated peptide around S611 & S615 of human SMO (NP_005622.1).
序列	SADVS

## 靶点信息

研究背景	The protein encoded by this gene is a G protein-coupled receptor that interacts with the patched protein, a receptor for hedgehog proteins. The encoded protein transduces signals to other proteins after activation by a hedgehog protein/patched protein complex.
基因ID	6608
基因名	SMO

Swiss	Q99835
别名	Gx;CRJS;SMOH;FZD11;SMO

## 产品验证



Western blot analysis of Phospho-SMO-S611/615 expressed in Jurkat using Phospho-SMO-S611/615 Rabbit pAb at 1:1000. Secondary antibody: HRP Goat Anti-Rabbit IgG (H+L) at 1:5000. Lysates/proteins: 30ug per lane. Blocking buffer: 5% non-fat dry milk in TBST. Detection: ECL Enhanced Kit. Exposure time: 120s.

## 实验步骤

访问官网浏览详情: [www.ablybio.cn](http://www.ablybio.cn)