

# ATP6V1C1 Rabbit pAb

货号: AYP21299

## 产品信息

反应	Human,Mouse
宿主	Rabbit
克隆性	Polyclonal
预测反应	
应用	WB
推荐浓度	<b>WB:</b> 1:500 - 1:2000
理论分子量	43kDa
实测分子量	43kDa
形式	Liquid
保存条件	Store at -20°C. Avoid freeze / thaw cycles. Buffer: PBS with 0.01% thiomersal,50% glycerol,pH7.3.
偶联物	Unconjugated
阳性对照	U-251MG,293T,Mouse kidney
细胞定位	cytosol,extracellular exosome,extrinsic component of synaptic vesicle membrane,plasma membrane
纯化	Affinity purification

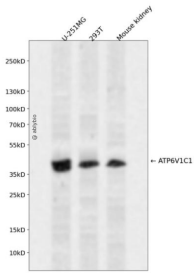
## 抗原信息

抗原信息	A synthetic peptide corresponding to a sequence within amino acids 300-382 of human ATP6V1C1 (NP_001686.1).
序列	LRVFVESVLRVGLPVNFAQMLLQPNKTKLKKLREVLHELYKHLDSAAAIIIDAPMDIPGLNLSQQEYYPVYVKIDCNLLEFK

## 靶点信息

研究背景	This gene encodes a component of vacuolar ATPase (V-ATPase), a multisubunit enzyme that mediates acidification of intracellular compartments of eukaryotic cells. V-ATPase dependent acidification is necessary for such intracellular processes as protein sorting, zymogen activation, receptor-mediated endocytosis, and synaptic vesicle proton gradient generation. V-ATPase is composed of a cytosolic V1 domain and a transmembrane V0 domain. The V1 domain consists of three A and three B subunits, two G subunits plus the C, D, E, F, and H subunits. The V1 domain contains the ATP catalytic site. The V0 domain consists of five different subunits: a, c, c', c'', and d. Additional isoforms of many of the V1 and V0 subunit proteins are encoded by multiple genes or alternatively spliced transcript variants. This gene is one of two genes that encode the V1 domain C subunit proteins and is found ubiquitously. This C subunit is analogous but not homologous to gamma subunit of F-ATPases. Previously, this gene was designated ATP6D.
基因ID	528
基因名	ATP6V1C1
Swiss	P21283
别名	ATP6V1C1;ATP6C;ATP6D;VATC;Vma5

## 产品验证



Western blot analysis of ATP6V1C1 expressed in U-251MG,293T,Mouse kidney using ATP6V1C1 Rabbit pAb at 1:1000. Secondary antibody: HRP Goat Anti-Rabbit IgG (H+L) at 1:5000. Lysates/proteins: 30ug per lane. Blocking buffer: 5% non-fat dry milk in TBST. Detection: ECL Enhanced Kit. Exposure time: 12 0s.

## 实验步骤

访问官网浏览详情: [www.ablybio.cn](http://www.ablybio.cn)