

# MYL6B Rabbit pAb

货号: **AYP21275**

## 产品信息

反应	Human,Mouse,Rat
宿主	Rabbit
克隆性	Polyclonal
预测反应	
应用	WB
推荐浓度	<b>WB:</b> 1:200 - 1:500
理论分子量	22kDa
实测分子量	25kDa
形式	Liquid
保存条件	Store at -20°C. Avoid freeze / thaw cycles. Buffer: PBS with 0.01% thiomersal,50% glycerol,pH7.3.
偶联物	Unconjugated
阳性对照	293T
细胞定位	cytosol,extracellular exosome
纯化	Affinity purification

## 抗原信息

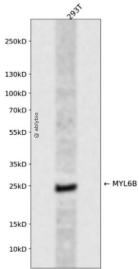
抗原信息	Recombinant fusion protein containing a sequence corresponding to amino acids 1-208 of human MYL6B (NP_002466.1).
序列	MPPKKDVPVKKPAGPSISKPAAKPAAAGAPPAKTKAEPAPVQAPQKTQEPVDLSKVVIEFNKDQLEEFKEAFELFDRVGD GKILYSQCGDVMRALGQNPTNAEVLKVLGNPKSDELKSRRVDFETFLPMLQAVAKNRGQGTIEDYLEGFRVFDKEGNGK VMGAELRHVLTTLGKMTTEEEVETVLAGHEDSNGCINYEAFKHILSV

## 靶点信息

研究背景	Myosin is a hexameric ATPase cellular motor protein. It is composed of two heavy chains, two nonphosphorylatable alkali light chains, and two phosphorylatable regulatory light chains. This gene encodes a myosin in alkali light chain expressed in both slow-twitch skeletal muscle and in nonmuscle tissue. Alternative splicing results in multiple transcript variants.
基因ID	140465

基因名	MYL6B
Swiss	P14649
别名	MYL6B;MLC1SA

## 产品验证



Western blot analysis of MYL6B expressed in 293T using MYL6B Rabbit pAb at 1:1000. Secondary antibody: HRP Goat Anti-Rabbit IgG (H+L) at 1:5000. Lysates/proteins: 30ug per lane. Blocking buffer: 5% non-fat dry milk in TBST. Detection: ECL Enhanced Kit. Exposure time: 120s.

## 实验步骤

访问官网浏览详情: [www.ablybio.cn](http://www.ablybio.cn)