

Phospho-Na⁺/K⁺-ATPase-S16 Rabbit pAb

货号: **AYP21193**

产品信息

反应	Human,Mouse,Rat
宿主	Rabbit
克隆性	Polyclonal
预测反应	
应用	WB
推荐浓度	WB: 1:500 - 1:2000
理论分子量	112kDa
实测分子量	112kDa
形式	Liquid
保存条件	Store at -20°C. Avoid freeze / thaw cycles. Buffer: PBS with 0.01% thiomersal,50% glycerol,pH7.3.
偶联物	Unconjugated
阳性对照	293T
细胞定位	Cell membrane,Melanosome,Multi-pass membrane protein
纯化	Affinity purification

抗原信息

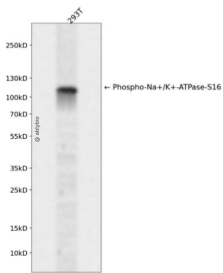
抗原信息	A synthetic phosphorylated peptide around S16 of human Na ⁺ /K ⁺ -ATPase (NP_000692.2).
序列	AVSEQ

靶点信息

研究背景	The protein encoded by this gene belongs to the family of P-type cation transport ATPases, and to the sub family of Na ⁺ /K ⁺ -ATPases. Na ⁺ /K ⁺ -ATPase is an integral membrane protein responsible for establishing and maintaining the electrochemical gradients of Na and K ions across the plasma membrane. These gradients are essential for osmoregulation, for sodium-coupled transport of a variety of organic and inorganic molecules, and for electrical excitability of nerve and muscle. This enzyme is composed of two subunits, a large catalytic subunit (alpha) and a smaller glycoprotein subunit (beta). The catalytic subunit of Na ⁺ /K ⁺ -ATPase is encoded by multiple genes. This gene encodes an alpha 1 subunit. Multiple transcript variants encoding different isoforms have been found for this gene.
------	---

基因ID	476
基因名	ATP1A1
Swiss	P05023
别名	ATP1A1;ATPase Na ⁺ /K ⁺ transporting subunit alpha 1;ATP1A;CMT2DD;HOMGSMR2

产品验证



Western blot analysis of Phospho-Na⁺/K⁺-ATPase-S16 expressed in 293T using Phospho-Na⁺/K⁺-ATPase-S16 Rabbit pAb at 1:1000. Secondary antibody: HRP Goat Anti-Rabbit IgG (H+L) at 1:5000. Lysates/proteins: 30ug per lane. Blocking buffer: 5% non-fat dry milk in TBST. Detection: ECL Enhanced Kit. Exposure time: 120s.

实验步骤

访问官网浏览详情: www.ablybio.cn