

S1PR2 Rabbit pAb

货号: **AYP21186**

产品信息

反应	Mouse,Rat
宿主	Rabbit
克隆性	Polyclonal
预测反应	
应用	WB
推荐浓度	WB: 1:500 - 1:1000
理论分子量	39kDa
实测分子量	40-50KDa
形式	Liquid
保存条件	Store at -20°C. Avoid freeze / thaw cycles. Buffer: PBS with 0.05% proclin300,50% glycerol,pH7.3.
偶联物	Unconjugated
阳性对照	Mouse heart,Rat lung,Rat heart
细胞定位	cytoplasm,plasma membrane,postsynapse
纯化	Affinity purification

抗原信息

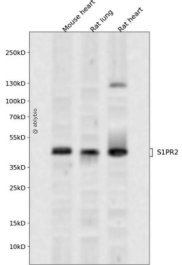
抗原信息	A synthetic peptide corresponding to a sequence within amino acids 250-353 of human S1PR2 (NP_00422 1.3).
序列	FSILLLDYACPVHSCPILYKAHYFFAVSTLNSLLNPVIYTWRSRDLRREVLRLPLQCWRPGVGVQRRRGGTPGHLLPLRSS SSLERGMHMPTSPFLEGNTVV

靶点信息

研究背景	This gene encodes a member of the G protein-coupled receptors, as well as the EDG family of proteins. The encoded protein is a receptor for sphingosine 1-phosphate, which participates in cell proliferation, survival, and transcriptional activation. Defects in this gene have been associated with congenital profound deafness.
基因ID	9294

基因名	S1PR2
Swiss	O95136
别名	EDG5;H218;LPB2;S1P2;AGR16;EDG-5;DFNB68;Gpcr13;S1PR2

产品验证



Western blot analysis of S1PR2 expressed in Mouse heart,Rat lung,Rat heart using S1PR2 Rabbit pAb at 1:1000. Secondary antibody: HRP Goat Anti-Rabbit IgG (H+L) at 1:5000. Lysates/proteins: 30ug per lane. Blocking buffer: 5% non-fat dry milk in TBST. Detection: ECL Enhanced Kit. Exposure time: 120s.

实验步骤

访问官网浏览详情: www.ablybio.cn