

MT-ND1 Rabbit pAb

货号: **AYP21173**

产品信息

反应	Human,Mouse,Rat
宿主	Rabbit
克隆性	Polyclonal
预测反应	
应用	WB IHC IF/ICC
推荐浓度	WB: 1:500 - 1:2000 IHC: 1:50 - 1:200 IF/ICC: 1:50 - 1:200
理论分子量	36kDa
实测分子量	36kDa
形式	Liquid
保存条件	Store at -20°C. Avoid freeze / thaw cycles. Buffer: PBS with 0.01% thiomersal,50% glycerol,pH7.3.
偶联物	Unconjugated
阳性对照	HeLa,HepG2,293T,mouse heart,mouse brain,mouse kidney,rat heart,rat brain
细胞定位	mitochondrial inner membrane,mitochondrial membrane,mitochondrial respiratory chain complex I
纯化	Affinity purification

抗原信息

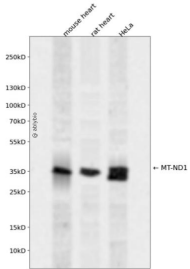
抗原信息	A synthetic peptide corresponding to a sequence within amino acids 1-100 of human MT-ND1 (YP_003024.026.1).
序列	MPMANLLLLIVPILIAMAFLMLTERKILGYMQLRKGPNVVGPYGLLQPFADAMKLFKEPLKPATSTITLYITAPTALTIALLLW TPLPMPNPLVNLNL

靶点信息

研究背景	Core subunit of the mitochondrial membrane respiratory chain NADH dehydrogenase (Complex I which catalyzes electron transfer from NADH through the respiratory chain, using ubiquinone as an electron acceptor. Essential for the catalytic activity and assembly of complex I.
基因ID	4535

基因名	MT-ND1
Swiss	P03886
别名	MTND1;MT-ND1

产品验证



Western blot analysis of MT-ND1 expressed in mouse heart, rat heart, HeLa using MT-ND1 Rabbit pAb at 1:1000. Secondary antibody: HRP Goat Anti-Rabbit IgG (H+L) at 1:5000. Lysates/proteins: 30ug per lane. Blocking buffer: 5% non-fat dry milk in TBST. Detection: ECL Enhanced Kit. Exposure time: 120s.

实验步骤

访问官网浏览详情: www.ablybio.cn