

MTCO2 Rabbit pAb

货号: **AYP21172**

产品信息

反应	Human,Mouse,Rat
宿主	Rabbit
克隆性	Polyclonal
预测反应	
应用	WB IF/ICC
推荐浓度	WB: 1:1000 - 1:5000 IF/ICC: 1:50 - 1:200
理论分子量	25kDa
实测分子量	21KDa
形式	Liquid
保存条件	Store at -20°C. Avoid freeze / thaw cycles. Buffer: PBS with 0.01% thiomersal,50% glycerol,pH7.3.
偶联物	Unconjugated
阳性对照	HeLa
细胞定位	Mitochondrion inner membrane,Multi-pass membrane protein
纯化	Affinity purification

抗原信息

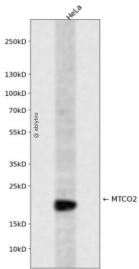
抗原信息	A synthetic peptide corresponding to a sequence within amino acids 40-100 of human MTCO2 (YP_003024029.1).
序列	YALFLTLTTKLTNTNISDAQEMETVWTLPAIILVLIALPSLRILYMTDEVNDPSLTIKSI

靶点信息

研究背景	MT-CO2 (mitochondrially encoded cytochrome c oxidase II) is a protein-coding gene. Diseases associated with MT-CO2 include cerebral aneurysms, and osteoblastoma.
基因ID	4513
基因名	MT-CO2

Swiss	P00403
别名	MT-CO2;COII;MTCO2;COX2

产品验证



Western blot analysis of MTCO2 expressed in HeLa using MTCO2 Rabbit pAb at 1:1000. Secondary antibody: HRP Goat Anti-Rabbit IgG (H+L) at 1:5000. Lysates/proteins: 30ug per lane. Blocking buffer: 5% non-fat dry milk in TBST. Detection: ECL Enhanced Kit. Exposure time: 120s.

实验步骤

访问官网浏览详情: www.ablybio.cn