

ZDHHC2 Rabbit pAb

货号: **AYP21170**

产品信息

反应	Human,Rat
宿主	Rabbit
克隆性	Polyclonal
预测反应	
应用	WB
推荐浓度	WB: 1:500 - 1:2000
理论分子量	
实测分子量	50kDa
形式	Liquid
保存条件	Store at -20°C. Avoid freeze / thaw cycles. Buffer: PBS with 0.01% thiomersal,50% glycerol,pH7.3.
偶联物	Unconjugated
阳性对照	BxPC-3,Rat lung
细胞定位	endoplasmic reticulum,Golgi apparatus,plasma membrane,postsynaptic density,postsynaptic recycling endosome
纯化	Affinity purification

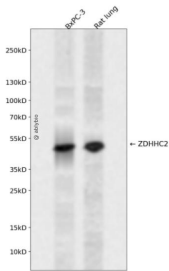
抗原信息

抗原信息	A synthetic peptide corresponding to a sequence within amino acids 270 to the C-terminus of human ZDHHC2 (NP_057437.1).
序列	QVFGDEKKYWLLPIFSSLGDCSFPTCLVNQDPEQASTPAGLNSTAKNLENHQFPAKPLRESQSHLLTDSQSWTESSINP GKCKAGMSNPALTMENET

靶点信息

研究背景	Palmitoyltransferase that catalyzes the addition of palmitate onto various protein substrates and is involved in a variety of cellular processes. Has no stringent fatty acid selectivity and in addition to palmitate can also transfer onto target proteins myristate from tetradecanoyl-CoA and stearate from octadecanoyl-CoA (By similarity). In the nervous system, plays a role in long term synaptic potentiation by palmitoylating AKAP5 through which it regulates protein trafficking from the dendritic recycling endosomes to the plasma membrane and controls both structural and functional plasticity at excitatory synapses (By similarity). In dendrites, mediates the palmitoylation of DLG4 when synaptic activity decreases and induces synaptic clustering of DLG4 and associated AMPA-type glutamate receptors (By similarity). Also mediates the de novo and turnover palmitoylation of RGS7BP, a shuttle for Gi/o-specific GTPase-activating proteins/GAPs, promoting its localization to the plasma membrane in response to the activation of G protein-coupled receptors.
基因ID	51201
基因名	ZDHHC2
Swiss	Q9UIJ5
别名	DHHC2;ZNF372;ZDHHC2

产品验证



Western blot analysis of ZDHHC2 expressed in BxPC-3,Rat lung using ZDHHC2 Rabbit pAb at 1:1000. Secondary antibody: HRP Goat Anti-Rabbit IgG (H+L) at 1:5000. Lysates/proteins: 30ug per lane. Blocking buffer: 5% non-fat dry milk in TBST. Detection: ECL Enhanced Kit. Exposure time: 120s.

实验步骤

访问官网浏览详情: www.ablybio.cn