

NIPSNAP1 Rabbit pAb

货号: **AYP21166**

产品信息

反应	Human,Mouse,Rat
宿主	Rabbit
克隆性	Polyclonal
预测反应	
应用	WB
推荐浓度	WB: 1:500 - 1:1000
理论分子量	
实测分子量	29KDa
形式	Liquid
保存条件	Store at -20°C. Avoid freeze / thaw cycles. Buffer: PBS with 0.05% proclin300,50% glycerol,pH7.3.
偶联物	Unconjugated
阳性对照	HT-29,HepG2,Mouse liver,Mouse brain,Rat liver,Rat kidney
细胞定位	mitochondrion,synaptic membrane
纯化	Affinity purification

抗原信息

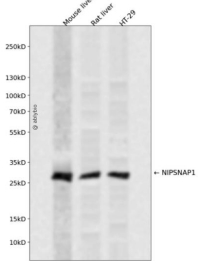
抗原信息	Recombinant fusion protein containing a sequence corresponding to amino acids 70-145 of human NIPSNAP1 (NP_003625.2).
序列	NLYKIQFHNVKPEYLDAYNSLTEAVLPKLHLDDEDYPCSLVGNWNTWYGEQDQAVHLWRFSGGYPALMDCMNKLKNN

靶点信息

研究背景	This gene encodes a member of the NipSnap family of proteins that may be involved in vesicular transport. A similar protein in mice inhibits the calcium channel TRPV6, and is also localized to the inner mitochondrial membrane where it may play a role in mitochondrial DNA maintenance. A pseudogene of this gene is located on the short arm of chromosome 17. Alternatively spliced transcript variants encoding multiple isoforms have been observed for this gene. [provided by RefSeq, Feb 2011]
基因ID	8508

基因名	NIPSNAP1
Swiss	Q9BPW8
别名	NIPSNAP1

产品验证



Western blot analysis of NIPSNAP1 expressed in Mouse liver,Rat liver,HT-29 using NIPSNAP1 Rabbit pAb at 1:1000. Secondary antibody: HRP Goat Anti-Rabbit IgG (H+L) at 1:5000. Lysates/proteins: 30ug per lane. Blocking buffer: 5% non-fat dry milk in TBST. Detection: ECL Enhanced Kit. Exposure time: 120 S.

实验步骤

访问官网浏览详情: www.ablybio.cn