

# RELN Rabbit pAb

货号: AYP21163

## 产品信息

|       |  |
|-------|--|
| 反应    | Human,Mouse,Rat  |
| 宿主    | Rabbit   |
| 克隆性   | Polyclonal   |
| 预测反应  |  |
| 应用    | WB IHC   |
| 推荐浓度  | <b>WB:</b> 1:500 - 1:2000<br><b>IHC:</b> 1:50 - 1:200  |
| 理论分子量 |  |
| 实测分子量 | 180KDa/388KDa  |
| 形式    | Liquid   |
| 保存条件  | Store at -20°C. Avoid freeze / thaw cycles.<br>Buffer: PBS with 0.01% thiomersal,50% glycerol,pH7.3.         |
| 偶联物   | Unconjugated   |
| 阳性对照  | U-87MG,C6,LO2,HepG2  |
| 细胞定位  | cytoplasm,dendrite,extracellular region,extracellular space,neuron projection,plasma membrane,reelin complex |
| 纯化    | Affinity purification  |

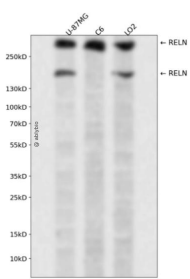
## 抗原信息

|      |  |
|------|--|
| 抗原信息 | Recombinant fusion protein containing a sequence corresponding to amino acids 2160-2320 of human RELN (NP_005036.2).   |
| 序列   | KISTKNPDFLKDDFEGQLESDFLLMSGGKPSRKCGILSSGNLFFNEDGLRMLMTRDLDSLHARFVQFFMRLGCGKGV<br>PDPRSQPVLLQYSLNGLSWSLLQEFLFSNSSNVGRYIALEIPLKARSGSTRLRWWQPSENGHFYSPWVIDQILIGGNISG<br>N |

## 靶点信息

|       |  |
|-------|--|
| 研究背景  | This gene encodes a large secreted extracellular matrix protein thought to control cell-cell interactions critical for cell positioning and neuronal migration during brain development. This protein may be involved in schizophrenia, autism, bipolar disorder, major depression and in migration defects associated with temporal lobe epilepsy. Mutations of this gene are associated with autosomal recessive lissencephaly with cerebellar hypoplasia. Two transcript variants encoding distinct isoforms have been identified for this gene. Other transcript variants have been described but their full length nature has not been determined. [provided by RefSeq, Jul 2008] |
| 基因ID  | 5649   |
| 基因名   | RELN   |
| Swiss | P78509   |
| 别名    | ETL7;LIS2;PRO1598;RL;RELN  |

## 产品验证



Western blot analysis of RELN expressed in U-87MG,C6,LO2 using RELN Rabbit pAb at 1:1000. Secondary antibody: HRP Goat Anti-Rabbit IgG (H+L) at 1:5000. Lysates/proteins: 30ug per lane. Blocking buffer: 5% non-fat dry milk in TBST. Detection: ECL Enhanced Kit. Exposure time: 120s.

## 实验步骤

访问官网浏览详情: [www.ablybio.cn](http://www.ablybio.cn)