

RPL35A Rabbit pAb

货号: AYP21160

产品信息

反应	Mouse,Rat
宿主	Rabbit
克隆性	Polyclonal
预测反应	
应用	WB
推荐浓度	WB: 1:500 - 1:2000
理论分子量	12kDa
实测分子量	12kDa
形式	Liquid
保存条件	Store at -20°C. Avoid freeze / thaw cycles. Buffer: PBS with 0.01% thiomersal,50% glycerol,pH7.3.
偶联物	Unconjugated
阳性对照	mouse stomach
细胞定位	cytoplasm,cytosol,cytosolic ribosome,extracellular exosome,synapse
纯化	Affinity purification

抗原信息

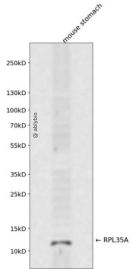
抗原信息	Recombinant fusion protein containing a sequence corresponding to amino acids 10-90 of human RPL35A (NP_000987.2).
序列	IFAGYKRGLRNQREHTALLKIEGVYARDETEFYLGKRCAYVYKAKNNTVTPGGKPNKTRVIWGKVTRAHGNSGMVRAKFR S

靶点信息

研究背景	
基因ID	6165
基因名	RPL35A

Swiss	P18077
别名	DBA5;L35A;RPL35A

产品验证



Western blot analysis of RPL35A expressed in mouse stomach using RPL35A Rabbit pAb at 1:1000. Secondary antibody: HRP Goat Anti-Rabbit IgG (H+L) at 1:5000. Lysates/proteins: 30ug per lane. Blocking buffer: 5% non-fat dry milk in TBST. Detection: ECL Enhanced Kit. Exposure time: 120s.

实验步骤

访问官网浏览详情: www.ablybio.cn