

# P2RY8 Rabbit pAb

货号: **AYP21155**

## 产品信息

反应	Human
宿主	Rabbit
克隆性	Polyclonal
预测反应	
应用	WB
推荐浓度	<b>WB:</b> 1:500 - 1:2000
理论分子量	
实测分子量	47kDa
形式	Liquid
保存条件	Store at -20°C. Avoid freeze / thaw cycles. Buffer: PBS with 0.01% thiomersal, 50% glycerol, pH7.3.
偶联物	Unconjugated
阳性对照	SGC-7901, Raji, K-562, 293T
细胞定位	plasma membrane
纯化	Affinity purification

## 抗原信息

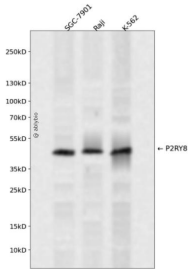
抗原信息	Recombinant fusion protein containing a sequence corresponding to amino acids 298-359 of human P2RY8 (NP_835230.1).
序列	REFQLRLREYLGCRVPRDTLDRRESLFSARTTSVRSEAGAHPEGMEGATRPGLQRQESVF

## 靶点信息

研究背景	The protein encoded by this gene belongs to the family of G-protein coupled receptors, that are preferentially activated by adenosine and uridine nucleotides. This gene is moderately expressed in undifferentiated HL60 cells, and is located on both chromosomes X and Y. [provided by RefSeq, Jul 2008]
基因ID	286530
基因名	P2RY8

Swiss	Q86VZ1
别名	P2Y8;P2RY8

## 产品验证



Western blot analysis of P2RY8 expressed in SGC-7901,Raji,K-562 using P2RY8 Rabbit pAb at 1:1000. Secondary antibody: HRP Goat Anti-Rabbit IgG (H+L) at 1:5000. Lysates/proteins: 30ug per lane. Blocking buffer: 5% non-fat dry milk in TBST. Detection: ECL Enhanced Kit. Exposure time: 120s.

## 实验步骤

访问官网浏览详情: [www.ablybio.cn](http://www.ablybio.cn)