

VWC2L Rabbit pAb

货号: **AYP21143**

产品信息

反应	Human,Mouse
宿主	Rabbit
克隆性	Polyclonal
预测反应	
应用	WB
推荐浓度	WB: 1:500 - 1:2000
理论分子量	
实测分子量	23kDa
形式	Liquid
保存条件	Store at -20°C. Avoid freeze / thaw cycles. Buffer: PBS with 0.01% thiomersal,50% glycerol,pH7.3.
偶联物	Unconjugated
阳性对照	U-251MG,SH-SY5Y,Mouse heart
细胞定位	
纯化	Affinity purification

抗原信息

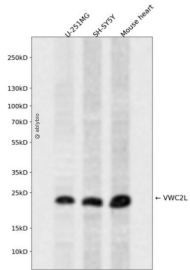
抗原信息	A synthetic peptide corresponding to a sequence within amino acids 1-50 of mouse VWC2L (NP_796138.2).
序列	MALHIHEACILLLVIPGLVTSAAISHEDYPADEGDQASSNDNLIFDDYRG

靶点信息

研究背景	Acts upstream of or within negative regulation of BMP signaling pathway and positive regulation of neuro n differentiation. Located in extracellular space. Part of AMPA glutamate receptor complex. Is expressed i n brain; central nervous system; hippocampus; hypothalamus; and thalamus. Orthologous to human VWC 2L (von Willebrand factor C domain containing 2 like).
基因ID	320460

基因名	
Swiss	
别名	A830006F12Rik;Brl;VWC2L

产品验证



Western blot analysis of VWC2L expressed in U-251MG,SH-SY5Y,Mouse heart using VWC2L Rabbit pAb at 1:1000. Secondary antibody: HRP Goat Anti-Rabbit IgG (H+L) at 1:5000. Lysates/proteins: 30ug per lane. Blocking buffer: 5% non-fat dry milk in TBST. Detection: ECL Enhanced Kit. Exposure time: 120s.

实验步骤

访问官网浏览详情: www.ablybio.cn