

# NAP1L5 Rabbit pAb

货号: AYP21139

## 产品信息

反应	Mouse
宿主	Rabbit
克隆性	Polyclonal
预测反应	
应用	WB
推荐浓度	<b>WB:</b> 1:500 - 1:1000
理论分子量	
实测分子量	20kDa
形式	Liquid
保存条件	Store at -20°C. Avoid freeze / thaw cycles. Buffer: PBS with 0.01% thiomersal, 50% glycerol, pH7.3.
偶联物	Unconjugated
阳性对照	Mouse brain
细胞定位	nucleus
纯化	Affinity purification

## 抗原信息

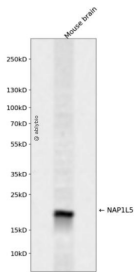
抗原信息	Recombinant fusion protein containing a sequence corresponding to amino acids 30-120 of human NAP1L5 (NP_715638.1).
序列	GGAQGGDCDSAAGDPDSAAGQMAEEPQTPAENAPKPKNDFIESLPNSVKCRVLALKKLQKRCDKIEAKFDKEFQALEKKYNDIYKPLLAKI

## 靶点信息

研究背景	This gene encodes a protein that shares sequence similarity to nucleosome assembly factors, but may be localized to the cytoplasm rather than the nucleus. Expression of this gene is downregulated in hepatocellular carcinomas. This gene is located within a differentially methylated region (DMR) and is imprinted and paternally expressed. There is a related pseudogene on chromosome 4. [provided by RefSeq, Nov 2015]
基因ID	266812

基因名	NAP1L5
Swiss	Q96NT1
别名	DRLM;NAP1L5

## 产品验证



Western blot analysis of NAP1L5 expressed in Mouse brain using NAP1L5 Rabbit pAb at 1:1000. Secondary antibody: HRP Goat Anti-Rabbit IgG (H+L) at 1:5000. Lysates/proteins: 30ug per lane. Blocking buffer: 5% non-fat dry milk in TBST. Detection: ECL Enhanced Kit. Exposure time: 120s.

## 实验步骤

访问官网浏览详情: [www.ablybio.cn](http://www.ablybio.cn)