

# EML3 Rabbit pAb

货号: AYP21136

## 产品信息

反应	Human
宿主	Rabbit
克隆性	Polyclonal
预测反应	
应用	WB
推荐浓度	<b>WB:</b> 1:500 - 1:2000
理论分子量	
实测分子量	95kDa
形式	Liquid
保存条件	Store at -20°C. Avoid freeze / thaw cycles. Buffer: PBS with 0.01% thiomersal,50% glycerol,pH7.3.
偶联物	Unconjugated
阳性对照	THP-1
细胞定位	cytoplasm,microtubule cytoskeleton,nucleus,spindle,spindle microtubule
纯化	Affinity purification

## 抗原信息

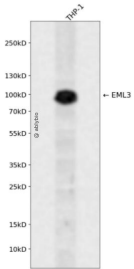
抗原信息	Recombinant fusion protein containing a sequence corresponding to amino acids 300-530 of human EML3 (NP_694997.2).
序列	HYRGHTDCVRCLAVHPDGVRVASGQTAGVDKDGKPLQPVWHIWDSETLLKLQEIGLGAFERGVGALAFSAADQGAFLCV VDDSNEHMLSVDCSRGMKLAIEKSTNDSVLAVGFNPRDSSCIVTSGKSHVHFNNWSGGVGVPGNGTLTRKQGVFGK YKKPKFIPCFVFLPDGDILTGDSEGNILTWGRSPSDSKTPGRGGAKETYGIVAQAHAHEGSIFALCLRRDGTVLS

## 靶点信息

研究背景	Regulates mitotic spindle assembly, microtubule (MT-kinetochore attachment and chromosome separation) via recruitment of HAUS augmin-like complex and TUBG1 to the existing MTs and promoting MT-based MT nucleation. Required for proper alignment of chromosomes during metaphase.
基因ID	256364

基因名	EML3
Swiss	Q32P44
别名	ELP95;EML3

## 产品验证



Western blot analysis of EML3 expressed in THP-1 using EML3 Rabbit pAb at 1:1000. Secondary antibody: HRP Goat Anti-Rabbit IgG (H+L) at 1:5000. Lysates/proteins: 30ug per lane. Blocking buffer: 5% non-fat dry milk in TBST. Detection: ECL Enhanced Kit. Exposure time: 120s.

## 实验步骤

访问官网浏览详情: [www.ablybio.cn](http://www.ablybio.cn)