

APLF Rabbit pAb

货号: **AYP21132**

产品信息

反应	Rat
宿主	Rabbit
克隆性	Polyclonal
预测反应	
应用	WB
推荐浓度	WB: 1:500 - 1:2000
理论分子量	56kDa
实测分子量	57kDa
形式	Liquid
保存条件	Store at -20°C. Avoid freeze / thaw cycles. Buffer: PBS with 0.01% thiomersal, 50% glycerol, pH7.3.
偶联物	Unconjugated
阳性对照	Rat lung
细胞定位	cytosol, nucleoplasm, nucleus
纯化	Affinity purification

抗原信息

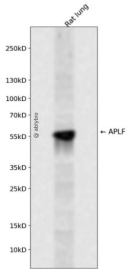
抗原信息	Recombinant fusion protein containing a sequence corresponding to amino acids 200-380 of human APLF (NP_775816.1).
序列	LSVPAISGGNVIQSGSGKEEICKDKSQLNTTQQGRRQLISSGSSSENTSAEQDTGEECKNTDQEESTISSKEMPQSFSAITLS NTEMNNIKTNAQRNKLPIEELGKVKHKIATKRTPHKEDEAMSCSENCSSAQGDSLQDESQGSHESSSNPSNPETLHAK ATDSVLQSGSEGNKVKRTSCM

靶点信息

研究背景	C2ORF13 is a component of the cellular response to chromosomal DNA single- and double-strand breaks (Iles et al., 2007 [PubMed 17353262]). [supplied by OMIM, Mar 2008]
基因ID	200558

基因名	APLF
Swiss	Q8IW19
别名	APFL;C2orf13;PALF;Xip1;ZCCHH1;APLF

产品验证



Western blot analysis of APLF expressed in Rat lung using APLF Rabbit pAb at 1:1000. Secondary antibody : HRP Goat Anti-Rabbit IgG (H+L) at 1:5000. Lysates/proteins: 30ug per lane. Blocking buffer: 5% non-fat dry milk in TBST. Detection: ECL Enhanced Kit. Exposure time: 120s.

实验步骤

访问官网浏览详情: www.ablybio.cn