

# PSORS1C1 Rabbit pAb

货号: **AYP21131**

## 产品信息

反应	Human
宿主	Rabbit
克隆性	Polyclonal
预测反应	
应用	WB
推荐浓度	<b>WB:</b> 1:500 - 1:2000
理论分子量	
实测分子量	16kDa
形式	Liquid
保存条件	Store at -20°C. Avoid freeze / thaw cycles. Buffer: PBS with 0.01% thiomersal, 50% glycerol, pH7.3.
偶联物	Unconjugated
阳性对照	A-431, LO2, BxPC-3, K-562
细胞定位	
纯化	Affinity purification

## 抗原信息

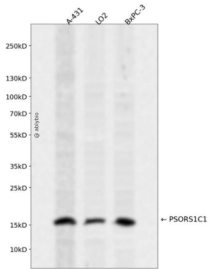
抗原信息	A synthetic peptide corresponding to a sequence within amino acids 40-100 of human PSORS1C1 (NP_054787.2).
序列	HVNPDLCHMEPANHFHAGDLQAMISKEFHAAATQDDCRKGRTQEDILVPSSHPELFAVS

## 靶点信息

研究背景	This gene is one of several genes thought to confer susceptibility to psoriasis and systemic sclerosis, located on chromosome 6 near the major histocompatibility complex (MHC) class I region. [provided by RefSeq, Sep 2011]
基因ID	170679
基因名	PSORS1C1

<b>Swiss</b>	Q9UIG5
别名	C6orf16;SEEK1;PSORS1C1

## 产品验证



Western blot analysis of PSORS1C1 expressed in A-431,LO2,BxPC-3 using PSORS1C1 Rabbit pAb at 1:1000. Secondary antibody: HRP Goat Anti-Rabbit IgG (H+L) at 1:5000. Lysates/proteins: 30ug per lane. Blocking buffer: 5% non-fat dry milk in TBST. Detection: ECL Enhanced Kit. Exposure time: 120s.

## 实验步骤

访问官网浏览详情: [www.ablybio.cn](http://www.ablybio.cn)