

IGSF11 Rabbit pAb

货号: **AYP21128**

产品信息

反应	Human,Mouse
宿主	Rabbit
克隆性	Polyclonal
预测反应	
应用	WB
推荐浓度	WB: 1:500 - 1:2000
理论分子量	43kDa/46kDa
实测分子量	46kDa
形式	Liquid
保存条件	Store at -20°C. Avoid freeze / thaw cycles. Buffer: PBS with 0.01% thiomersal,50% glycerol,pH7.3.
偶联物	Unconjugated
阳性对照	293T,Mouse testis,Mouse brain
细胞定位	excitatory synapse,plasma membrane,postsynaptic density
纯化	Affinity purification

抗原信息

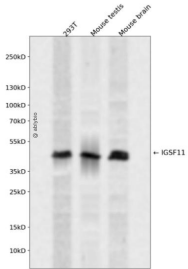
抗原信息	Recombinant fusion protein containing a sequence corresponding to amino acids 80-200 of human IGSF1 1 (NP_689751.2).
序列	MFDGAPRFHGRVGFGTMPATNVSIFINNTQLSDTGTYQCLVNNLPDIGGRNIGVTGLTVLVPPSAPHCQIQGSQDIGSD VILLCSSEEGIPRPTYLWEKLDNTLKLPTATQDQVQGTVT

靶点信息

研究背景	IGSF11 is an immunoglobulin (Ig) superfamily member that is preferentially expressed in brain and testis. It shares significant homology with coxsackievirus and adenovirus receptor (CXADR; MIM 602621) and endothelial cell-selective adhesion molecule (ESAM).[supplied by OMIM, Apr 2005]
基因ID	152404

基因名	IGSF11
Swiss	Q5DX21
别名	BT-IgSF;CT1119;CXADRL1;lgsf13;VSIG3;IGSF11

产品验证



Western blot analysis of IGSF11 expressed in 293T, Mouse testis, Mouse brain using IGSF11 Rabbit pAb at 1:1000. Secondary antibody: HRP Goat Anti-Rabbit IgG (H+L) at 1:5000. Lysates/proteins: 30ug per lane. Blocking buffer: 5% non-fat dry milk in TBST. Detection: ECL Enhanced Kit. Exposure time: 120s.

实验步骤

访问官网浏览详情: www.ablybio.cn