

CLVS2 Rabbit pAb

货号: **AYP21123**

产品信息

反应	Human
宿主	Rabbit
克隆性	Polyclonal
预测反应	
应用	WB
推荐浓度	WB: 1:500 - 1:2000
理论分子量	
实测分子量	38kDa
形式	Liquid
保存条件	Store at -20°C. Avoid freeze / thaw cycles. Buffer: PBS with 0.01% thiomersal, 50% glycerol, pH7.3.
偶联物	Unconjugated
阳性对照	U-87MG, U-251MG
细胞定位	clathrin-coated vesicle, endosome, trans-Golgi network
纯化	Affinity purification

抗原信息

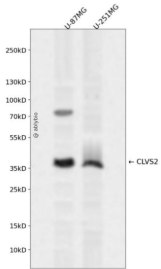
抗原信息	Recombinant fusion protein containing a sequence corresponding to amino acids 265-327 of human CLVS 2 (NP_001010852.2).
序列	LLDHEYDDDDSEYNVDSYSMPVKEVEKELSPKSMKRSQSVVDPTVLKRMKNEEENMQPLSLD

靶点信息

研究背景	This gene encodes a protein that belongs to the SEC14/CRAL-TRIO family of proteins. A similar protein in rat is thought to function in the endosomal pathway between early endosomes and mature lysosomes. [provided by RefSeq, Aug 2013]
基因ID	134829
基因名	CLVS2

Swiss	Q5SYC1
别名	C6orf212;C6orf213;RLBP1L2;bA160A10.4;CLVS2

产品验证



Western blot analysis of CLVS2 expressed in U-87MG,U-251MG using CLVS2 Rabbit pAb at 1:1000. Secondary antibody: HRP Goat Anti-Rabbit IgG (H+L) at 1:5000. Lysates/proteins: 30ug per lane. Blocking buffer: 5% non-fat dry milk in TBST. Detection: ECL Enhanced Kit. Exposure time: 120s.

实验步骤

访问官网浏览详情: www.ablybio.cn