

SFXN2 Rabbit pAb

货号: AYP21120

产品信息

反应	Human,Mouse,Rat
宿主	Rabbit
克隆性	Polyclonal
预测反应	
应用	WB
推荐浓度	WB: 1:500 - 1:1000
理论分子量	
实测分子量	36KDa
形式	Liquid
保存条件	Store at -20°C. Avoid freeze / thaw cycles. Buffer: PBS with 0.01% thiomersal,50% glycerol,pH7.3.
偶联物	Unconjugated
阳性对照	HepG2,Mouse kidney,Rat kidney,Rat pancreas
细胞定位	mitochondrial inner membrane,mitochondrial outer membrane,mitochondrion
纯化	Affinity purification

抗原信息

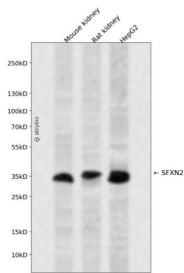
抗原信息	Recombinant fusion protein containing a sequence corresponding to amino acids 10-90 of human SFXN2 (NP_849189.1).
序列	IDAPRWDQRTFLGRVKHFLNITDPRTVFSERELDWAKVMVEKSRMGVVPPGTQVEQLLYAKKLYDSAFHPDGTGEKMNVI G

靶点信息

研究背景	Mitochondrial amino-acid transporter that mediates transport of serine into mitochondria.
基因ID	118980
基因名	SFXN2

Swiss	Q96NB2
别名	SFXN2

产品验证



Western blot analysis of SFXN2 expressed in Mouse kidney,Rat kidney,HepG2 using SFXN2 Rabbit pAb at 1:1000. Secondary antibody: HRP Goat Anti-Rabbit IgG (H+L) at 1:5000. Lysates/proteins: 30ug per lane. Blocking buffer: 5% non-fat dry milk in TBST. Detection: ECL Enhanced Kit. Exposure time: 120s.

实验步骤

访问官网浏览详情: www.ablybio.cn