

TUBGCP5 Rabbit pAb

货号: **AYP21110**

产品信息

反应	Rat
宿主	Rabbit
克隆性	Polyclonal
预测反应	
应用	WB
推荐浓度	WB: 1:500 - 1:2000
理论分子量	
实测分子量	118kDa
形式	Liquid
保存条件	Store at -20°C. Avoid freeze / thaw cycles. Buffer: PBS with 0.01% thiomersal,50% glycerol,pH7.3.
偶联物	Unconjugated
阳性对照	Rat heart
细胞定位	centrosome,cytosol,equatorial microtubule organizing center,gamma-tubulin complex,spindle pole
纯化	Affinity purification

抗原信息

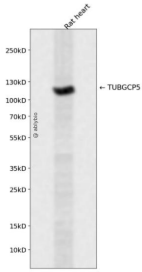
抗原信息	A synthetic peptide corresponding to a sequence within amino acids 100-200 of human TUBGCP5 (NP_443135.3).
序列	KEIKTDAHYSILSLLLCLSDSPSNSSYVETPRNKEVEKKDDFDWGKYLMEDEEMDIGPYMDTPNWSEEESEENDQQPLSR EDSGIQVDRTPLEEQDQNRKL

靶点信息

研究背景	Gamma-tubulin complex is necessary for microtubule nucleation at the centrosome.
基因ID	114791
基因名	TUBGCP5

Swiss	Q96RT8
别名	GCP5;TUBGCP5

产品验证



Western blot analysis of TUBGCP5 expressed in Rat heart using TUBGCP5 Rabbit pAb at 1:1000. Secondary antibody: HRP Goat Anti-Rabbit IgG (H+L) at 1:5000. Lysates/proteins: 30ug per lane. Blocking buffer: 5 % non-fat dry milk in TBST. Detection: ECL Enhanced Kit. Exposure time: 120s.

实验步骤

访问官网浏览详情: www.ablybio.cn