

# PIGM Rabbit pAb

货号: **AYP21107**

## 产品信息

反应	Human,Mouse,Rat
宿主	Rabbit
克隆性	Polyclonal
预测反应	
应用	WB IHC IF/ICC
推荐浓度	<b>WB:</b> 1:500 - 1:2000 <b>IHC:</b> 1:50 - 1:200 <b>IF/ICC:</b> 1:50 - 1:200
理论分子量	
实测分子量	49kDa
形式	Liquid
保存条件	Store at -20°C. Avoid freeze / thaw cycles. Buffer: PBS with 0.01% thiomersal,50% glycerol,pH7.3.
偶联物	Unconjugated
阳性对照	BxPC-3,Mouse thymus,Mouse spleen,Mouse lung,Rat thymus,Rat spleen
细胞定位	
纯化	Affinity purification

## 抗原信息

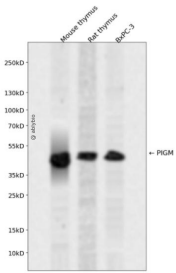
抗原信息	Recombinant fusion protein containing a sequence corresponding to amino acids 35-96 of human PIGM (N P_660150.1).
序列	YGVFQDRTLHVRYTDIDYQVFTDAARFVTEGRSPYLRATYRYTPLLGWLLTPNIYLSLSELF GK

## 靶点信息

研究背景	This gene encodes a transmembrane protein that is located in the endoplasmic reticulum and is involved in GPI-anchor biosynthesis. The glycosylphosphatidylinositol (GPI)-anchor is a glycolipid which contains three mannose molecules in its core backbone. The GPI-anchor is found on many blood cells and serves to anchor proteins to the cell surface. This gene encodes a mannosyltransferase, GPI-MT-I, that transfers the first mannose to GPI on the luminal side of the endoplasmic reticulum. [provided by RefSeq, Jul 2008]
------	--

基因ID	93183
基因名	PIGM
Swiss	Q9H3S5
别名	GPI-MT-I;PIGM

## 产品验证



Western blot analysis of PIGM expressed in Mouse thymus,Rat thymus,BxPC-3 using PIGM Rabbit pAb at 1:1000. Secondary antibody: HRP Goat Anti-Rabbit IgG (H+L) at 1:5000. Lysates/proteins: 30ug per lane . Blocking buffer: 5% non-fat dry milk in TBST. Detection: ECL Enhanced Kit. Exposure time: 120s.

## 实验步骤

访问官网浏览详情: [www.ablybio.cn](http://www.ablybio.cn)