

RCCD1 Rabbit pAb

货号: **AYP21106**

产品信息

反应	Human,Rat
宿主	Rabbit
克隆性	Polyclonal
预测反应	
应用	WB
推荐浓度	WB: 1:500 - 1:2000
理论分子量	
实测分子量	45kDa
形式	Liquid
保存条件	Store at -20°C. Avoid freeze / thaw cycles. Buffer: PBS with 0.01% thiomersal,50% glycerol,pH7.3.
偶联物	Unconjugated
阳性对照	THP-1
细胞定位	cytosol,plasma membrane
纯化	Affinity purification

抗原信息

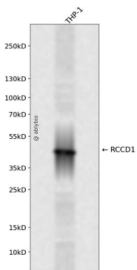
抗原信息	Recombinant fusion protein containing a sequence corresponding to amino acids 230-360 of human RCC D1 (NP_001017919.1).
序列	DIYIWGWNESGQLALPTRNLAEDGETVAREATELNEDGSQVKRTGGAEDGAPAPFIAVQPFALLDLPMSDAVKASCG SRHTAVVTRTGELYTWGWGKYGQLGHEDTSLDRPRRVEYFVDKQLQVKAVT

靶点信息

研究背景	Plays a role in transcriptional repression of satellite repeats, possibly by regulating H3K36 methylation levels in centromeric regions together with KDM8. Possibly together with KDM8, is involved in proper mitotic spindle organization and chromosome segregation. Plays a role in regulating alpha-tubulin deacetylation and cytoskeletal microtubule stability, thereby promoting cell migration and TGF-beta-induced epithelial to mesenchymal transition (EMT, potentially through the inhibition of KDM8.
基因ID	91433

基因名	RCCD1
Swiss	A6NED2
别名	RCCD1

产品验证



Western blot analysis of RCCD1 expressed in THP-1 using RCCD1 Rabbit pAb at 1:1000. Secondary antibody: HRP Goat Anti-Rabbit IgG (H+L) at 1:5000. Lysates/proteins: 30ug per lane. Blocking buffer: 5% non-fat dry milk in TBST. Detection: ECL Enhanced Kit. Exposure time: 120s.

实验步骤

访问官网浏览详情: www.ablybio.cn