

NKD1 Rabbit pAb

货号: **AYP21099**

产品信息

反应	Human
宿主	Rabbit
克隆性	Polyclonal
预测反应	
应用	WB
推荐浓度	WB: 1:500 - 1:2000
理论分子量	
实测分子量	60kDa
形式	Liquid
保存条件	Store at -20°C. Avoid freeze / thaw cycles. Buffer: PBS with 0.01% thiomersal, 50% glycerol, pH7.3.
偶联物	Unconjugated
阳性对照	293T, LO2
细胞定位	cytoplasm, plasma membrane
纯化	Affinity purification

抗原信息

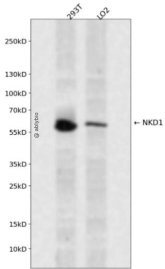
抗原信息	A synthetic peptide corresponding to a sequence within amino acids 1-100 of human NKD1 (NP_149110.1).
序列	MGKLHSPAAVCKRRESPEGDSFAVSAAWARKGIEEWIGRQRCPGGVSGPRQLRLAGTIGRSTRELVDVLRDTLSEEEE DDFRLEVALPPEKTDGLGSG

靶点信息

研究背景	In the mouse, Nkd is a Dishevelled (see DVL1; MIM 601365)-binding protein that functions as a negative regulator of the Wnt (see WNT1; MIM 164820)-beta-catenin (see MIM 116806)-Tcf (see MIM 602272) signaling pathway.[supplied by OMIM, Jun 2003]
基因ID	85407

基因名	NKD1
Swiss	Q969G9
别名	Naked1;NKD1

产品验证



Western blot analysis of NKD1 expressed in 293T,LO2 using NKD1 Rabbit pAb at 1:1000. Secondary antibody: HRP Goat Anti-Rabbit IgG (H+L) at 1:5000. Lysates/proteins: 30ug per lane. Blocking buffer: 5% non-fat dry milk in TBST. Detection: ECL Enhanced Kit. Exposure time: 120s.

实验步骤

访问官网浏览详情: www.ablybio.cn