

ABLIM2 Rabbit pAb

货号: **AYP21093**

产品信息

反应	Mouse,Rat
宿主	Rabbit
克隆性	Polyclonal
预测反应	
应用	WB
推荐浓度	WB: 1:500 - 1:2000
理论分子量	
实测分子量	68kDa
形式	Liquid
保存条件	Store at -20°C. Avoid freeze / thaw cycles. Buffer: PBS with 0.01% thiomersal,50% glycerol,pH7.3.
偶联物	Unconjugated
阳性对照	Rat lung
细胞定位	actin cytoskeleton,cytoplasm
纯化	Affinity purification

抗原信息

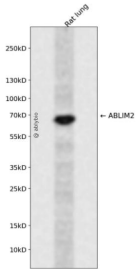
抗原信息	Recombinant fusion protein containing a sequence corresponding to amino acids 74-309 of human ABLIM 2 (NP_115808.3).
序列	DYQRLYGTRCFSCDQFIEGEVVSALGKTYHPDCFVCAVCRLPFPFGDRVTFNGKECMCQKCSLPVSVGSSAHLSQLRS CGGCGTEIKNGQALVALDKHWHLGCFKCKSCGKLLNAEYISKDGLPYCEADYHAKFGIRCDSCKEYITGRVLEAGEKHYP SCALCVRRCQMFAEGEEMYLQGSSIWHPACRQAARTEDRNKETRTSSESIISVPASSTSGSPSRVIYAKLGGEILD

靶点信息

研究背景	May act as scaffold protein. May stimulate ABRA activity and ABRA-dependent SRF transcriptional activity .
基因ID	84448

基因名	ABLIM2
Swiss	Q6H8Q1
别名	ABLIM2

产品验证



Western blot analysis of ABLIM2 expressed in Rat lung using ABLIM2 Rabbit pAb at 1:1000. Secondary anti body: HRP Goat Anti-Rabbit IgG (H+L) at 1:5000. Lysates/proteins: 30ug per lane. Blocking buffer: 5% no n-fat dry milk in TBST. Detection: ECL Enhanced Kit. Exposure time: 120s.

实验步骤

访问官网浏览详情: www.ablybio.cn