

MARVELD1 Rabbit pAb

货号: **AYP21089**

产品信息

反应	Human,Mouse,Rat
宿主	Rabbit
克隆性	Polyclonal
预测反应	
应用	WB
推荐浓度	WB: 1:500 - 1:2000
理论分子量	
实测分子量	19kDa
形式	Liquid
保存条件	Store at -20°C. Avoid freeze / thaw cycles. Buffer: PBS with 0.01% thiomersal,50% glycerol,pH7.3.
偶联物	Unconjugated
阳性对照	HT-29,Mouse heart,Rat heart
细胞定位	cytoplasm,cytoskeleton,nucleus,plasma membrane
纯化	Affinity purification

抗原信息

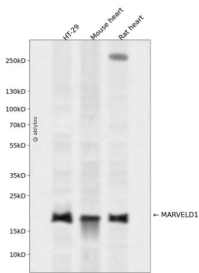
抗原信息	A synthetic peptide corresponding to a sequence within amino acids 1-50 of human MARVELD1 (NP_113672.1).
序列	MLPPPPRQPPPQARAARGAVRLQRPFLLRSPLGVLRLLQLLAGAAFWITIA

靶点信息

研究背景	Microtubule-associated protein that exhibits cell cycle-dependent localization and can inhibit cell proliferation and migration.
基因ID	83742
基因名	MARVELD1

Swiss	Q9BSK0
别名	GB14;MARVD1;MRVLDC1;bA548K23.8;MARVELD1

产品验证



Western blot analysis of MARVELD1 expressed in HT-29, Mouse heart, Rat heart using MARVELD1 Rabbit pAb at 1:1000. Secondary antibody: HRP Goat Anti-Rabbit IgG (H+L) at 1:5000. Lysates/proteins: 30 ug per lane. Blocking buffer: 5% non-fat dry milk in TBST. Detection: ECL Enhanced Kit. Exposure time : 120s.

实验步骤

访问官网浏览详情: www.ablybio.cn