

MRPL41 Rabbit pAb

货号: **AYP21081**

产品信息

反应	Human,Mouse,Rat
宿主	Rabbit
克隆性	Polyclonal
预测反应	
应用	WB IHC IF/ICC
推荐浓度	WB: 1:500 - 1:2000 IHC: 1:50 - 1:100 IF/ICC: 1:50 - 1:100
理论分子量	
实测分子量	15kDa
形式	Liquid
保存条件	Store at -20°C. Avoid freeze / thaw cycles. Buffer: PBS with 0.01% thiomersal,50% glycerol,pH7.3.
偶联物	Unconjugated
阳性对照	293T,PC-3,MCF7
细胞定位	mitochondrial inner membrane,mitochondrion
纯化	Affinity purification

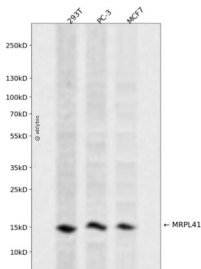
抗原信息

抗原信息	Recombinant fusion protein containing a sequence corresponding to amino acids 1-137 of human MRPL4 1 (NP_115866.1).
序列	MGVLAAAARCLVRGADRMSKWTSKRGPRFRGRKGRGAKGIGFLTSGWRFVQIKEMVPEFVVPDLTGFKLKPYSYLAP ESEETPLTAAQLFSEAVAPAIEKDFKDGTFDPDNLEKYGFEPTEQEGKLFQLYPRNFLR

靶点信息

研究背景	Mammalian mitochondrial ribosomal proteins are encoded by nuclear genes and help in protein synthesis within the mitochondrion. Mitochondrial ribosomes (mitoribosomes) consist of a small 28S subunit and a large 39S subunit. They have an estimated 75% protein to rRNA composition compared to prokaryotic ribosomes, where this ratio is reversed. Another difference between mammalian mitoribosomes and prokaryotic ribosomes is that the latter contain a 5S rRNA. Among different species, the proteins comprising the mitoribosome differ greatly in sequence, and sometimes in biochemical properties, which prevents easy recognition by sequence homology. This gene encodes a 39S subunit protein that belongs to the YmL27 ribosomal protein family. [provided by RefSeq, Jul 2008]
基因ID	64975
基因名	MRPL41
Swiss	Q8IXM3
别名	BMRP;MRP-L27;MRPL27;PIG3;RPML27;MRPL41

产品验证



Western blot analysis of MRPL41 expressed in 293T, PC-3, MCF7 using MRPL41 Rabbit pAb at 1:1000. Secondary antibody: HRP Goat Anti-Rabbit IgG (H+L) at 1:5000. Lysates/proteins: 30ug per lane. Blocking buffer: 5% non-fat dry milk in TBST. Detection: ECL Enhanced Kit. Exposure time: 120s.

实验步骤

访问官网浏览详情: www.ablybio.cn