

SLC25A22 Rabbit pAb

货号: **AYP21080**

产品信息

反应	Human,Mouse,Rat
宿主	Rabbit
克隆性	Polyclonal
预测反应	
应用	WB IF/ICC
推荐浓度	WB: 1:500 - 1:2000 IF/ICC: 1:50 - 1:200
理论分子量	
实测分子量	34kDa
形式	Liquid
保存条件	Store at -20°C. Avoid freeze / thaw cycles. Buffer: PBS with 0.01% thiomersal,50% glycerol,pH7.3.
偶联物	Unconjugated
阳性对照	U-87MG,HepG2,A-549,A-431,Mouse brain,Rat brain,293T
细胞定位	mitochondrial inner membrane
纯化	Affinity purification

抗原信息

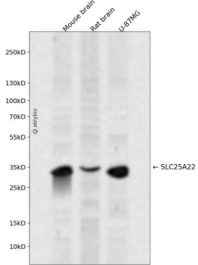
抗原信息	Recombinant fusion protein containing a sequence corresponding to amino acids 128-188 of human SLC25A22 (NP_078974.1).
序列	KIQLQDAGRIAAQRKILAAQGQLSAQGGQAQPSVEAPAAPRPTATQLTRDLLRSRGIAGLYK

靶点信息

研究背景	This gene encodes a mitochondrial glutamate carrier. Mutations in this gene are associated with early infantile epileptic encephalopathy. Multiple alternatively spliced variants, encoding the same protein, have been identified.[provided by RefSeq, Jul 2010]
基因ID	79751

基因名	SLC25A22
Swiss	Q9H936
别名	EIEE3;GC-1;GC1;NET44;SLC25A22

产品验证



Western blot analysis of SLC25A22 expressed in Mouse brain,Rat brain,U-87MG using SLC25A22 Rabbit pAb at 1:1000. Secondary antibody: HRP Goat Anti-Rabbit IgG (H+L) at 1:5000. Lysates/proteins: 30 ug per lane. Blocking buffer: 5% non-fat dry milk in TBST. Detection: ECL Enhanced Kit. Exposure time : 120s.

实验步骤

访问官网浏览详情: www.ablybio.cn