

# LRRK1 Rabbit pAb

货号: **AYP21076**

## 产品信息

反应	Human
宿主	Rabbit
克隆性	Polyclonal
预测反应	
应用	WB
推荐浓度	<b>WB:</b> 1:500 - 1:2000
理论分子量	
实测分子量	250kDa
形式	Liquid
保存条件	Store at -20°C. Avoid freeze / thaw cycles. Buffer: PBS with 0.01% thiomersal,50% glycerol,pH7.3.
偶联物	Unconjugated
阳性对照	Raji
细胞定位	cytoplasm,cytosol,mitochondrion
纯化	Affinity purification

## 抗原信息

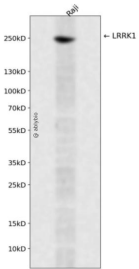
抗原信息	Recombinant fusion protein containing a sequence corresponding to amino acids 10-90 of human LRRK1 ( NP_078928.3).
序列	SMYWCVGPPEESAVCPERAMETLNGAGDTGGKPSTRGGDPAARSRTEGIRAAAYRRGDRGGARDLLEEACDQCASQLEK GQL

## 靶点信息

研究背景	This gene encodes a multi-domain protein that is a leucine-rich repeat kinase and a GDP/GTP binding protein. The encoded protein is thought to play a role in the regulation of bone mass. Mice lacking a similar gene showed severe osteopetrosis, increased bone mineralization and decreased bone resorption. [provided by RefSeq, Jan 2017]
基因ID	79705

基因名	LRRK1
Swiss	Q38SD2
别名	RIPK6;Roco1;LRRK1

## 产品验证



Western blot analysis of LRRK1 expressed in Raji using LRRK1 Rabbit pAb at 1:1000. Secondary antibody: HRP Goat Anti-Rabbit IgG (H+L) at 1:5000. Lysates/proteins: 30ug per lane. Blocking buffer: 5% non-fat dry milk in TBST. Detection: ECL Enhanced Kit. Exposure time: 120s.

## 实验步骤

访问官网浏览详情: [www.ablybio.cn](http://www.ablybio.cn)