

THOC6 Rabbit pAb

货号: **AYP21074**

产品信息

反应	Human,Mouse
宿主	Rabbit
克隆性	Polyclonal
预测反应	
应用	WB
推荐浓度	WB: 1:500 - 1:2000
理论分子量	32kDa/34kDa/37kDa
实测分子量	38kDa
形式	Liquid
保存条件	Store at -20°C. Avoid freeze / thaw cycles. Buffer: PBS with 0.01% thiomersal,50% glycerol,pH7.3.
偶联物	Unconjugated
阳性对照	Raji,HT-29,LO2,Mouse ovary
细胞定位	
纯化	Affinity purification

抗原信息

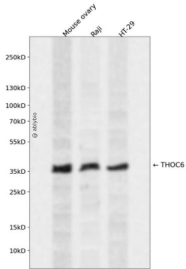
抗原信息	A synthetic peptide corresponding to a sequence within amino acids 50-150 of human THOC6 (NP_077315.2).
序列	IFSLSSALSSEAKEESKPVVTFQAHDGPVYSMVSTDRHLLSAGDGEVKAWLWAEMLKKGCKELWRRQPPYRTSLEVPEINALLVPKENSILLAGGDCQL

靶点信息

研究背景	This gene encodes a subunit of the multi-protein THO complex, which is involved in coordination between transcription and mRNA processing. The THO complex is a component of the TREX (transcription/export) complex, which is involved in transcription and export of mRNAs. A missense mutation in this gene is associated with a neurodevelopmental disorder called Beaulieu-Boycott-Innes syndrome. [provided by RefSeq, Dec 2016]
基因ID	79228

基因名	THOC6
Swiss	Q86W42
别名	THOC6;WDR58;fSAP35;BBIS

产品验证



Western blot analysis of THOC6 expressed in Mouse ovary, Raji, HT-29 using THOC6 Rabbit pAb at 1:1000. Secondary antibody: HRP Goat Anti-Rabbit IgG (H+L) at 1:5000. Lysates/proteins: 30ug per lane. Blocking buffer: 5% non-fat dry milk in TBST. Detection: ECL Enhanced Kit. Exposure time: 120s.

实验步骤

访问官网浏览详情: www.ablybio.cn