

CELF6 Rabbit pAb

货号: **AYP21070**

产品信息

反应	Mouse,Rat
宿主	Rabbit
克隆性	Polyclonal
预测反应	
应用	WB
推荐浓度	WB: 1:500 - 1:2000
理论分子量	
实测分子量	51kDa
形式	Liquid
保存条件	Store at -20°C. Avoid freeze / thaw cycles. Buffer: PBS with 0.01% thiomersal,50% glycerol,pH7.3.
偶联物	Unconjugated
阳性对照	Mouse brain,Mouse testis,Mouse large intestine,Rat testis
细胞定位	cytoplasm,nucleus
纯化	Affinity purification

抗原信息

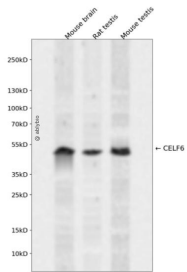
抗原信息	Recombinant fusion protein containing a sequence corresponding to amino acids 230-380 of human CELF 6 (NP_443072.3).
序列	LGAFHPAPLPLGACGAYTTAILQHQAALLAAQGPGLGPVAAVAAQMQHVAAFSLVAAPLLPAAAAANSPPGSGPGLPGLPAPIGVNGFGPLTPQTNGQPGSDTLYNNGLSPYPAQSPGVADPLQQAYAGMHYAAAYPSAYAPVSTAFPQ

靶点信息

研究背景	Members of the CELF/BRUNOL protein family contain two N-terminal RNA recognition motif (RRM) domains, one C-terminal RRM domain, and a divergent segment of 160-230 aa between the second and third RRM domains. Members of this protein family regulate pre-mRNA alternative splicing and may also be involved in mRNA editing, and translation. Multiple alternatively spliced transcript variants encoding different isoforms have been identified in this gene. [provided by RefSeq, Feb 2010]
基因ID	60677

基因名	CELF6
Swiss	Q96J87
别名	BRUNOL6;CELF6

产品验证



Western blot analysis of CELF6 expressed in Mouse brain,Rat testis,Mouse testis using CELF6 Rabbit pAb at 1:1000. Secondary antibody: HRP Goat Anti-Rabbit IgG (H+L) at 1:5000. Lysates/proteins: 30ug per lane. Blocking buffer: 5% non-fat dry milk in TBST. Detection: ECL Enhanced Kit. Exposure time: 120s.

实验步骤

访问官网浏览详情: www.ablybio.cn