

KLC2 Rabbit pAb

货号: **AYP21067**

产品信息

反应	Human,Mouse,Rat
宿主	Rabbit
克隆性	Polyclonal
预测反应	
应用	WB
推荐浓度	WB: 1:500 - 1:2000
理论分子量	60kDa/68kDa
实测分子量	69kDa
形式	Liquid
保存条件	Store at -20°C. Avoid freeze / thaw cycles. Buffer: PBS with 0.01% thiomersal,50% glycerol,pH7.3.
偶联物	Unconjugated
阳性对照	Raji,Mouse brain,Rat lung,Rat testis
细胞定位	
纯化	Affinity purification

抗原信息

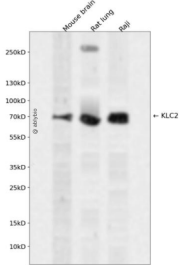
抗原信息	Recombinant fusion protein containing a sequence corresponding to amino acids 1-90 of human KLC2 (NP_073733.1).
序列	MAMMVFPREEKLSQDEIVLGTKAVIQGLETLRGEHRALLAPLVAPEAGEAEPGSQERCILLRRSLEAIELGLGEAQVILALSSH LGAVES

靶点信息

研究背景	The protein encoded by this gene is a light chain of kinesin, a molecular motor responsible for moving vesicles and organelles along microtubules. Defects in this gene are a cause of spastic paraplegia, optic atrophy, and neuropathy (SPOAN) syndrome. [provided by RefSeq, Mar 2016]
基因ID	64837

基因名	KLC2
Swiss	Q9H0B6
别名	KLC2;SPOAN

产品验证



Western blot analysis of KLC2 expressed in Mouse brain,Rat lung,Raji using KLC2 Rabbit pAb at 1:1000. Secondary antibody: HRP Goat Anti-Rabbit IgG (H+L) at 1:5000. Lysates/proteins: 30ug per lane. Blocking buffer: 5% non-fat dry milk in TBST. Detection: ECL Enhanced Kit. Exposure time: 120s.

实验步骤

访问官网浏览详情: www.ablybio.cn