

CHTF18 Rabbit pAb

货号: **AYP21064**

产品信息

反应	Human,Rat
宿主	Rabbit
克隆性	Polyclonal
预测反应	
应用	WB IF/ICC
推荐浓度	WB: 1:500 - 1:2000 IF/ICC: 1:50 - 1:200
理论分子量	
实测分子量	130kDa
形式	Liquid
保存条件	Store at -20°C. Avoid freeze / thaw cycles. Buffer: PBS with 0.01% thiomersal,50% glycerol,pH7.3.
偶联物	Unconjugated
阳性对照	HeLa
细胞定位	cytosol,nucleoplasm,nucleus
纯化	Affinity purification

抗原信息

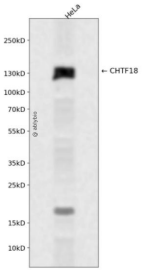
抗原信息	Recombinant fusion protein containing a sequence corresponding to amino acids 794-975 of human CHTF 18 (NP_071375.1).
序列	GTMLAYSLTYRQERTPDGQYIYRLEPNVEELCRFPELPARKPLTYQTKQLIAREIEVEKMRRAEASARVENSQVDGSPGPLE GLLGIGEGKGVHRPAPRNHEQRLEHIMRRAAREEQPEKDFGRVVRSTAVPSAGDTAPEQDSVERRMGTAVGRSEVWF RFNEGVSNAVRRSLYIRDLL

靶点信息

研究背景	This gene encodes a protein which is a component of a replication factor C (RFC) complex, which loads proliferating cell nuclear antigen (PCNA) on to DNA during the S phase of cell cycle. The encoded protein may interact with other proteins, including RFC complex 3, to form a clamp loader complex that plays a role in sister chromatid cohesion during metaphase-anaphase transition. [provided by RefSeq, Jan 2016]
------	---

基因ID	63922
基因名	CHTF18
Swiss	Q8WVB6
别名	C16orf41;C321D2.2;C321D2.3;C321D2.4;CHL12;Ctf18;RUVBL;CHTF18

产品验证



Western blot analysis of CHTF18 expressed in HeLa using CHTF18 Rabbit pAb at 1:1000. Secondary antibody: HRP Goat Anti-Rabbit IgG (H+L) at 1:5000. Lysates/proteins: 30ug per lane. Blocking buffer: 5% non-fat dry milk in TBST. Detection: ECL Enhanced Kit. Exposure time: 120s.

实验步骤

访问官网浏览详情: www.ablybio.cn