

# SMAP1 Rabbit pAb

货号: **AYP21062**

## 产品信息

反应	Human,Mouse,Rat
宿主	Rabbit
克隆性	Polyclonal
预测反应	
应用	WB IF/ICC
推荐浓度	<b>WB:</b> 1:500 - 1:2000 <b>IF/ICC:</b> 1:50 - 1:200
理论分子量	
实测分子量	50kDa
形式	Liquid
保存条件	Store at -20°C. Avoid freeze / thaw cycles. Buffer: PBS with 0.01% thiomersal,50% glycerol,pH7.3.
偶联物	Unconjugated
阳性对照	Mouse heart
细胞定位	cytoplasm,plasma membrane
纯化	Affinity purification

## 抗原信息

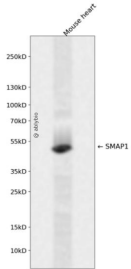
抗原信息	Recombinant fusion protein containing a sequence corresponding to amino acids 180-250 of human SMA P1 (NP_001037770).
序列	EPEKPAKPLTAEKLQKKDQQLPKKSTSPKAAEPTVDLLGLDGPVAVPTNGNTTVPLNDDLDIFGPMI

## 靶点信息

研究背景	The protein encoded by this gene is similar to the mouse stromal membrane-associated protein-1. This similarity suggests that this human gene product is also a type II membrane glycoprotein involved in the erythropoietic stimulatory activity of stromal cells. Alternate splicing results in multiple transcript variants encoding different isoforms. [provided by RefSeq, Jul 2008]
基因ID	60682

基因名	SMAP1
Swiss	Q8IYB5
别名	SMAP-1;SMAP1

## 产品验证



Western blot analysis of SMAP1 expressed in Mouse heart using SMAP1 Rabbit pAb at 1:1000. Secondary antibody: HRP Goat Anti-Rabbit IgG (H+L) at 1:5000. Lysates/proteins: 30ug per lane. Blocking buffer: 5% non-fat dry milk in TBST. Detection: ECL Enhanced Kit. Exposure time: 120s.

## 实验步骤

访问官网浏览详情: [www.ablybio.cn](http://www.ablybio.cn)