

EEFSEC Rabbit pAb

货号: **AYP21061**

产品信息

反应	Human
宿主	Rabbit
克隆性	Polyclonal
预测反应	
应用	WB
推荐浓度	WB: 1:500 - 1:2000
理论分子量	
实测分子量	72kDa
形式	Liquid
保存条件	Store at -20°C. Avoid freeze / thaw cycles. Buffer: PBS with 0.01% thiomersal, 50% glycerol, pH7.3.
偶联物	Unconjugated
阳性对照	Raji, HepG2, HeLa
细胞定位	cytoplasm, nucleus
纯化	Affinity purification

抗原信息

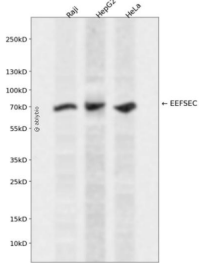
抗原信息	Recombinant fusion protein containing a sequence corresponding to amino acids 347-596 of human EEFS EC (NP_068756.2).
序列	RLMFFSPAPDNFDQEPILDSFNFSQEYLFQEYLSKDLTPAVTDNDEADKKAGQATEGHCPRQQWALVEFEKPVTCPRLC LVIGSRLDADIHTNTRCLAFHGILLHGLEDRNYADSFLPRLKVYKHKHGLVERAMDDYSVIGRSLFKKETNIQLFVGLKVH LSTGELGIIDSAFGQSGKFKIHIPGGLSPESKILTPALKKRARAGRGEATRQEESAERSEPSQHVVLSLTFKRYVFDTHKRM VQSP

靶点信息

研究背景	Translation factor necessary for the incorporation of selenocysteine into proteins. It probably replaces EF-Tu for the insertion of selenocysteine directed by the UGA codon. SelB binds GTP and GDP.
基因ID	60678

基因名	EEFSEC
Swiss	P57772
别名	EFSEC;SELB;EEFSEC

产品验证



Western blot analysis of EEFSEC expressed in Raji, HepG2, HeLa using EEFSEC Rabbit pAb at 1:1000. Secondary antibody: HRP Goat Anti-Rabbit IgG (H+L) at 1:5000. Lysates/proteins: 30ug per lane. Blocking buffer: 5% non-fat dry milk in TBST. Detection: ECL Enhanced Kit. Exposure time: 120s.

实验步骤

访问官网浏览详情: www.ablybio.cn