

POGLUT1 Rabbit pAb

货号: **AYP21053**

产品信息

反应	Mouse,Rat
宿主	Rabbit
克隆性	Polyclonal
预测反应	
应用	WB IF/ICC
推荐浓度	WB: 1:500 - 1:2000 IF/ICC: 1:50 - 1:200
理论分子量	
实测分子量	46kDa
形式	Liquid
保存条件	Store at -20°C. Avoid freeze / thaw cycles. Buffer: PBS with 0.01% thiomersal,50% glycerol,pH7.3.
偶联物	Unconjugated
阳性对照	Mouse spleen,Mouse lung,Mouse brain,Rat brain
细胞定位	endoplasmic reticulum,endoplasmic reticulum lumen
纯化	Affinity purification

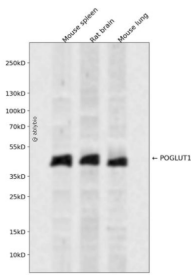
抗原信息

抗原信息	Recombinant fusion protein containing a sequence corresponding to amino acids 160-280 of human POG LUT1 (NP_689518.1).
序列	MYPAWTFWEGGPAVWPIYPTGLGRWDLFREDLVRSAQWPWKKNSTAYFRGSRTSPERDPLILLSRKNPKLVD AEYTK NQAWKSMKDTLGKPAAKDVHLVDHCKYKYLNFNFRGVAASFRF

靶点信息

研究背景	This gene encodes a protein with both O-glucosyltransferase and O-xylosyltransferase activity which localizes to the lumen of the endoplasmic reticulum. This protein has a carboxy-terminal KTEL motif which is predicted to function as an endoplasmic reticulum retention signal. This gene is an essential regulator of Notch signalling and likely plays a role in cell fate and tissue formation during development. It may also play a role in the pathogenesis of leukemia. Mutations in this gene have been associated with the autosomal dominant genodermatosis Dowling-Degos disease 4. Alternative splicing results in multiple transcript variants. [provided by RefSeq, Apr 2014]
基因ID	56983
基因名	POGLUT1
Swiss	Q8NBL1
别名	C3orf9;CLP46;KDELCL1;KTELC1;LGMD2Z;MDS010;MDSRP;Rumi;hCLP46;POGLUT1

产品验证



Western blot analysis of POGLUT1 expressed in Mouse spleen, Rat brain, Mouse lung using POGLUT1 Rabbit pAb at 1:1000. Secondary antibody: HRP Goat Anti-Rabbit IgG (H+L) at 1:5000. Lysates/proteins: 30ug per lane. Blocking buffer: 5% non-fat dry milk in TBST. Detection: ECL Enhanced Kit. Exposure time: 120s.

实验步骤

访问官网浏览详情: www.ablybio.cn