

PCDHB4 Rabbit pAb

货号: **AYP21049**

产品信息

反应	Human,Mouse,Rat
宿主	Rabbit
克隆性	Polyclonal
预测反应	
应用	WB IF/ICC
推荐浓度	WB: 1:500 - 1:2000 IF/ICC: 1:50 - 1:200
理论分子量	
实测分子量	87kDa
形式	Liquid
保存条件	Store at -20°C. Avoid freeze / thaw cycles. Buffer: PBS with 0.01% thiomersal,50% glycerol,pH7.3.
偶联物	Unconjugated
阳性对照	293T,Raji,Mouse testis,Rat testis
细胞定位	plasma membrane,synapse
纯化	Affinity purification

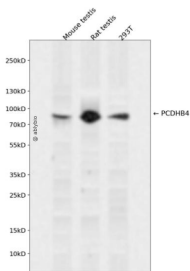
抗原信息

抗原信息	Recombinant fusion protein containing a sequence corresponding to amino acids 28-300 of human PCDH B4 (NP_061761.1).
序列	EPIRYSVLEETESGSFVAHLAKDLGLGIGELASRSARVLSDDDKQRLQLDRQTGDLLLREKLDREELCGPIEPCVLHFQVFL EMPVQFFQGELLIQDINDHSPIFPEREVLLKILENSQPGTLFPLLIAEDLDVGSNGLQKYTISPNSHFILTRNHSEGKKYPDL VQDKPLDREEQPEFSLTLVALDGGSPPRSGTVMVRILIMDINDNAPEFVHTPYGVQVLENSPLDSPIVRVLARDIDAGNFG SVSYGLFQASDEIKQTF SINEVTGEI

靶点信息

研究背景	This gene is a member of the protocadherin beta gene cluster, one of three related gene clusters tandemly linked on chromosome five. The gene clusters demonstrate an unusual genomic organization similar to that of B-cell and T-cell receptor gene clusters. The beta cluster contains 16 genes and 3 pseudogenes, each encoding 6 extracellular cadherin domains and a cytoplasmic tail that deviates from others in the cadherin superfamily. The extracellular domains interact in a homophilic manner to specify differential cell-cell connections. Unlike the alpha and gamma clusters, the transcripts from these genes are made up of only one large exon, not sharing common 3' exons as expected. These neural cadherin-like cell adhesion proteins are integral plasma membrane proteins. Their specific functions are unknown but they most likely play a critical role in the establishment and function of specific cell-cell neural connections. [provided by RefSeq, Jul 2008]
基因ID	56131
基因名	PCDHB4
Swiss	Q9Y5E5
别名	PCDH-BETA4;PCDHB4

产品验证



Western blot analysis of PCDHB4 expressed in Mouse testis, Rat testis, 293T using PCDHB4 Rabbit pAb at 1:1000. Secondary antibody: HRP Goat Anti-Rabbit IgG (H+L) at 1:5000. Lysates/proteins: 30ug per lane. Blocking buffer: 5% non-fat dry milk in TBST. Detection: ECL Enhanced Kit. Exposure time: 120s.

实验步骤

访问官网浏览详情: www.ablybio.cn