

# RAB20 Rabbit pAb

货号: **AYP21042**

## 产品信息

反应	Mouse
宿主	Rabbit
克隆性	Polyclonal
预测反应	
应用	WB IF/ICC
推荐浓度	<b>WB:</b> 1:500 - 1:2000 <b>IF/ICC:</b> 1:50 - 1:200
理论分子量	26kDa
实测分子量	26kDa
形式	Liquid
保存条件	Store at -20°C. Avoid freeze / thaw cycles. Buffer: PBS with 0.01% thiomersal, 50% glycerol, pH 7.3.
偶联物	Unconjugated
阳性对照	Mouse heart
细胞定位	Cytoplasmic side, Cytoplasmic vesicle, Golgi apparatus, Lipid-anchor, phagosome, phagosome membrane
纯化	Affinity purification

## 抗原信息

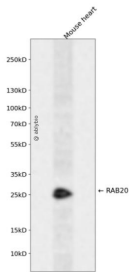
抗原信息	Recombinant fusion protein containing a sequence corresponding to amino acids 80-190 of human RAB20 (NP_060287.1).
序列	YDVNHRQSLVELEDRFLGLTDTASKDCLFAIVGNKVDLTEEGALAGQEKEECSPNMDAGDRVSPRAPKQVQLEDAVALY KKILKYKMLDEQDVPAAEQMCFETSAKTGYNV

## 靶点信息

研究背景	Plays a role in apical endocytosis/recycling. Plays a role in the maturation and acidification of phagosomes that engulf pathogens, such as S.aureus and M.tuberculosis. Plays a role in the fusion of phagosomes with lysosomes.
基因ID	55647

基因名	RAB20
Swiss	Q9NX57
别名	RAB20

## 产品验证



Western blot analysis of RAB20 expressed in Mouse heart using RAB20 Rabbit pAb at 1:1000. Secondary antibody: HRP Goat Anti-Rabbit IgG (H+L) at 1:5000. Lysates/proteins: 30ug per lane. Blocking buffer: 5% non-fat dry milk in TBST. Detection: ECL Enhanced Kit. Exposure time: 120s.

## 实验步骤

访问官网浏览详情: [www.ablybio.cn](http://www.ablybio.cn)