

MTMR8 Rabbit pAb

货号: **AYP21040**

产品信息

反应	Human,Mouse,Rat
宿主	Rabbit
克隆性	Polyclonal
预测反应	
应用	WB IHC
推荐浓度	WB: 1:500 - 1:2000 IHC: 1:50 - 1:200
理论分子量	66kDa/78kDa
实测分子量	79kDa
形式	Liquid
保存条件	Store at -20°C. Avoid freeze / thaw cycles. Buffer: PBS with 0.01% thiomersal,50% glycerol,pH7.3.
偶联物	Unconjugated
阳性对照	U-87MG,SKOV3,HT-29
细胞定位	
纯化	Affinity purification

抗原信息

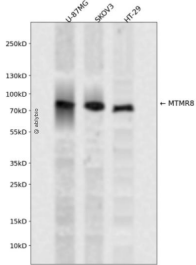
抗原信息	Recombinant fusion protein containing a sequence corresponding to amino acids 430-560 of human MTMR8 (NP_060147.2).
序列	HVFSCQFGNFLGNCQKDREDLRVYEKTHSVWPFLVQRKPDFRNPLYKGFTMYGVLNPSTVPYNIQFWCGMYNRFDKGLQPKQSMLESLEIKKQRAMLETDVHELEKCLKVRDEPPEEICTCSQLGNILSQ

靶点信息

研究背景	This gene encodes a member of the myotubularin-related family and is part of the MTMR6 subgroup. Family members are dual-specificity phosphatases and the encoded protein contains a phosphoinositide-binding domain (PID) and a SET-interacting domain (SID). Defects in other family members have been found in myotubular myopathic diseases. [provided by RefSeq, Mar 2010]
基因ID	55613

基因名	MTMR8
Swiss	Q96EF0
别名	MTMR8

产品验证



Western blot analysis of MTMR8 expressed in U-87MG,SKOV3,HT-29 using MTMR8 Rabbit pAb at 1:1000. Secondary antibody: HRP Goat Anti-Rabbit IgG (H+L) at 1:5000. Lysates/proteins: 30ug per lane. Blocking buffer: 5% non-fat dry milk in TBST. Detection: ECL Enhanced Kit. Exposure time: 120s.

实验步骤

访问官网浏览详情: www.ablybio.cn